

8410TL FIXED WINDOW 3-6

8430TL SINGLE HUNG WINDOW 7-12

8450TL DOUBLE HUNG WINDOW 13-18

8470TL HORIZONTAL SLIDER 19-23

MULLIONS 24-27

RECEPTORS AND SUB SILLS 28

ANCHORING 29

THERMAL CHARTS 30-42

Laws and building and safety codes governing the design and use of glazed entrance, window, and curtain wall products vary widely. Kawneer does not control the selection of product configurations, operating hardware, or glazing materials, and assumes no responsibility therefor.

Kawneer reserves the right to change configuration without prior notice when deemed necessary for product improvement.
© Kawneer Company, Inc., 2011

LAWS AND BUILDING AND SAFETY CODES GOVERNING THE DESIGN AND USE OF GLAZED ENTRANCE, WINDOW, AND CURTAIN WALL PRODUCTS VARY WIDELY. KAWNEER DOES NOT CONTROL THE SELECTION OF PRODUCT CONFIGURATIONS, OPERATING HARDWARE, OR GLAZING MATERIALS, AND ASSUMES NO RESPONSIBILITY THEREFOR.

Metric (SI) conversion figures are included throughout these details for reference. Numbers in parentheses () are millimeters unless otherwise noted.

The following metric (SI) units are found in these details:

- m – meter
- cm – centimeter
- mm – millimeter
- s – second
- Pa – pascal
- MPa – megapascal

Kawneer reserves the right to change configurations without prior notice when deemed necessary for product improvement.

Laws and building and safety codes governing the design and use of glazed entrance, window, and curtain wall products vary widely. Kawneer does not control the selection of product configurations, operating hardware, or glazing materials, and assumes no responsibility therefor.

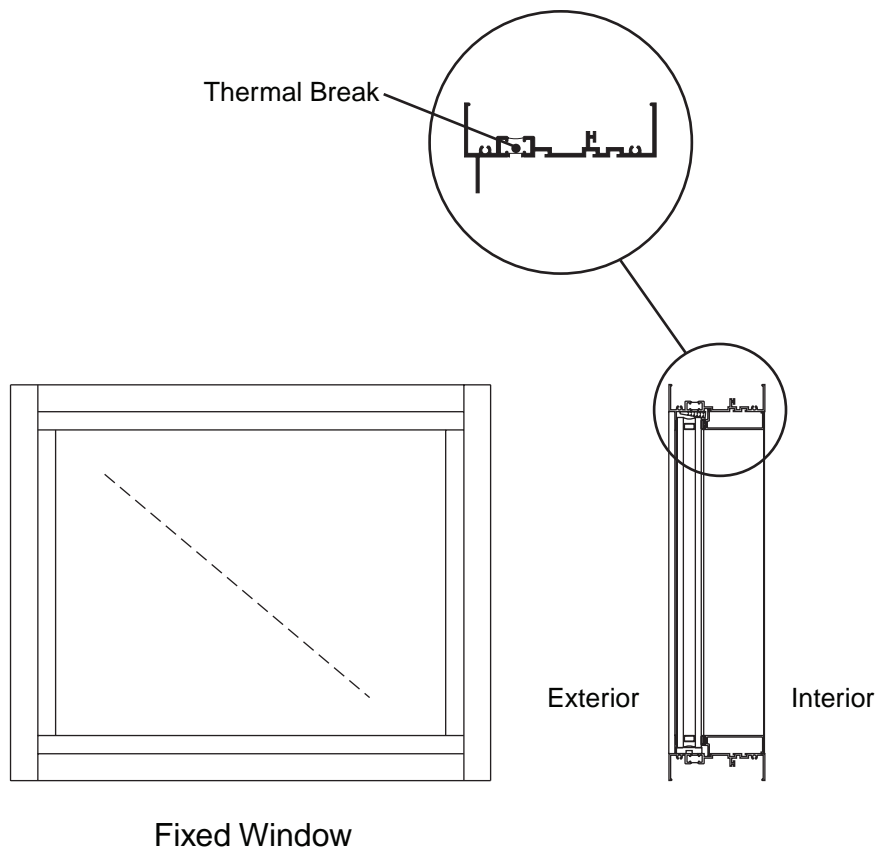
Kawneer reserves the right to change configuration without prior notice when deemed necessary for product improvement.
© Kawneer Company, Inc., 2011

Features

- Architectural Grade Window
- Series 8410TL Standard Design
- IsoLock™ Thermal Break
- Screw and Spline Frame Corner Joinery
- Factory Silicone Glazed
- Interior Applied Glazing Bead with Bulb Gasket
- Architectural Anodized Finishes and Applied Coatings
- Two Year Manufacturer's Warranty

Laws and building and safety codes governing the design and use of glazed entrance, window, and curtain wall products vary widely. Kawneer does not control the selection of product configurations, operating hardware, or glazing materials, and assumes no responsibility therefor.

Kawneer reserves the right to change configuration without prior notice when deemed necessary for product improvement.
© Kawneer Company, Inc., 2011



For specific product applications,
Consult your Kawneer representative.

CLASS and GRADE	Architectural Grade Window F-HC100 / F-AW100 / AW-PG100-FW					
TESTING STANDARD	AAMA / WDMA / CSA 101 / I.S. 2 / A440 (NAFS)					
FRAME DEPTH	4" Overall Frame Depth					
TYPICAL WALL THICKNESS	.070 Nominal					
TYPICAL MAXIMUM SIZE	60" x 99"					
TYPICAL MINIMUM SIZE	12" x 12"					
TYPICAL CONFIGURATIONS						
STANDARD INFILL OPTIONS	1/4", 3/4" with Glazed-in Muntin Grid, 1", and 1-1/2"					
STANDARD HARDWARE	Not Applicable					
OPTIONAL HARDWARE	Not Applicable					
OTHER OPTIONS	Exterior Glazed-in Muntin Grids Exterior Glazing Offset Glazing Perimeters and Sills Exterior Pannings and Interior Trims True Intermediate Mullions Structural Mullions Vertically or Horizontally Stacked					
PERFORMANCE	Air Infiltration Cfm/ft ²	Water Resistance PSF	Design Load PSF	Thermal Transmittance "U" Value	Condensation Resistance CRF	Sound Transmittance STC
	.30 @ 6.24 psf	15	100	.60	58	n/a

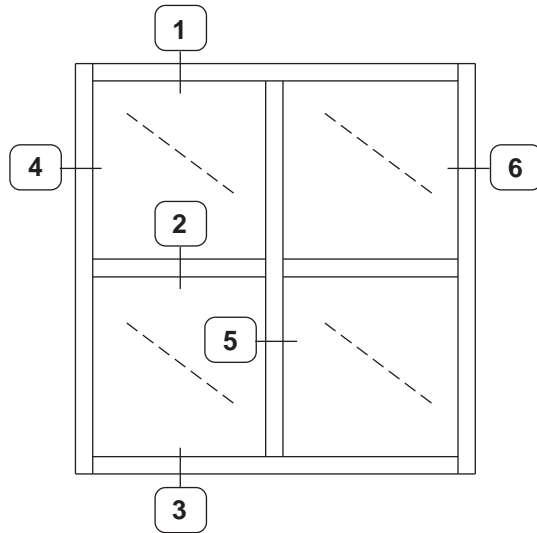
Note: Thermal values are based upon 1" clear insulating glass.

Laws and building and safety codes governing the design and use of glazed entrance, window, and curtain wall products vary widely. Kawneer does not control the selection of product configurations, operating hardware, or glazing materials, and assumes no responsibility therefor.

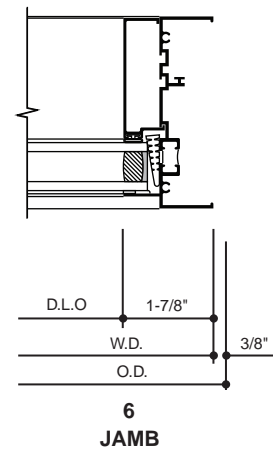
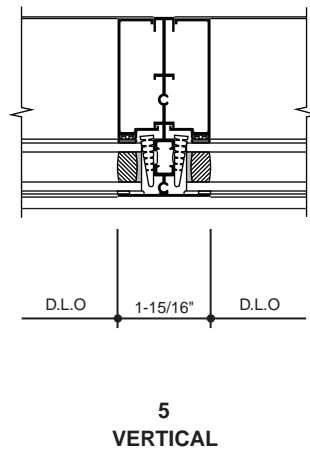
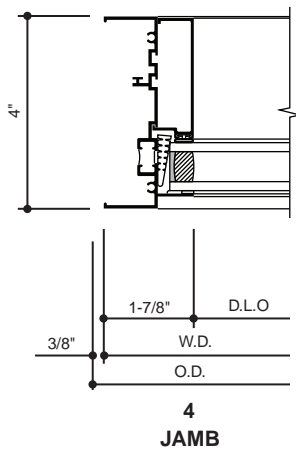
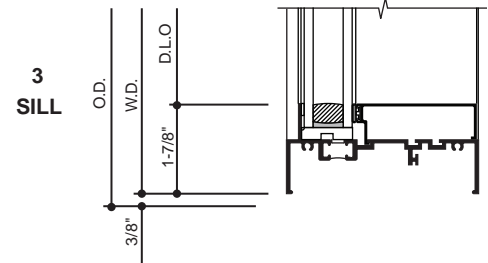
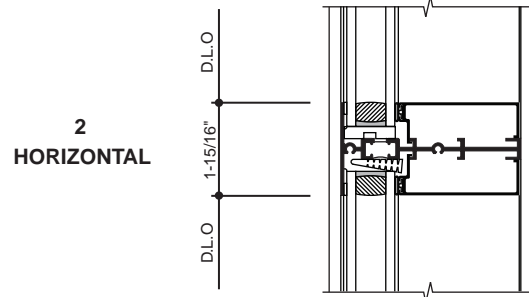
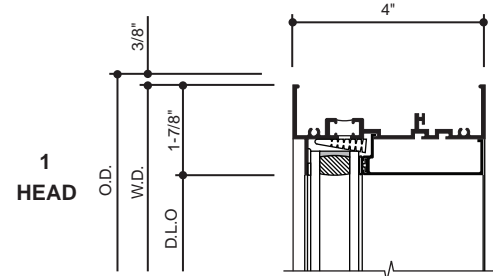
Kawneer reserves the right to change configuration without prior notice when deemed necessary for product improvement.
© Kawneer Company, Inc., 2011

SCALE : 3" = 1'-0"

8410TL FIXED WINDOW Standard Design



TYPICAL ELEVATION
Log onto www.kawneer.com for other configurations

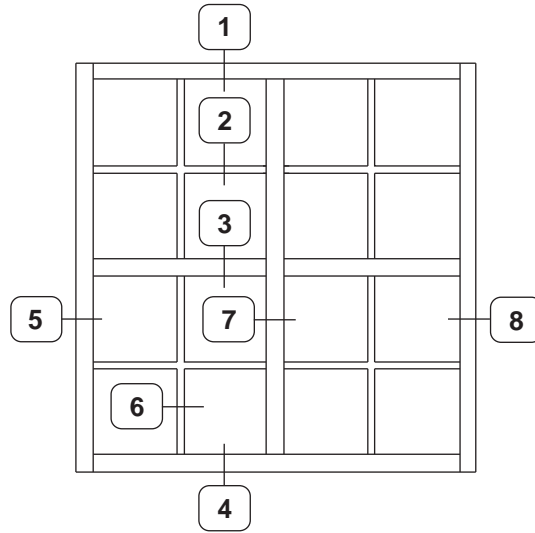


Laws and building and safety codes governing the design and use of glazed entrance, window, and curtain wall products vary widely. Kawneer does not control the selection of product configurations, operating hardware, or glazing materials, and assumes no responsibility therefor.

Kawneer reserves the right to change configuration without prior notice when deemed necessary for product improvement.
© Kawneer Company, Inc., 2011

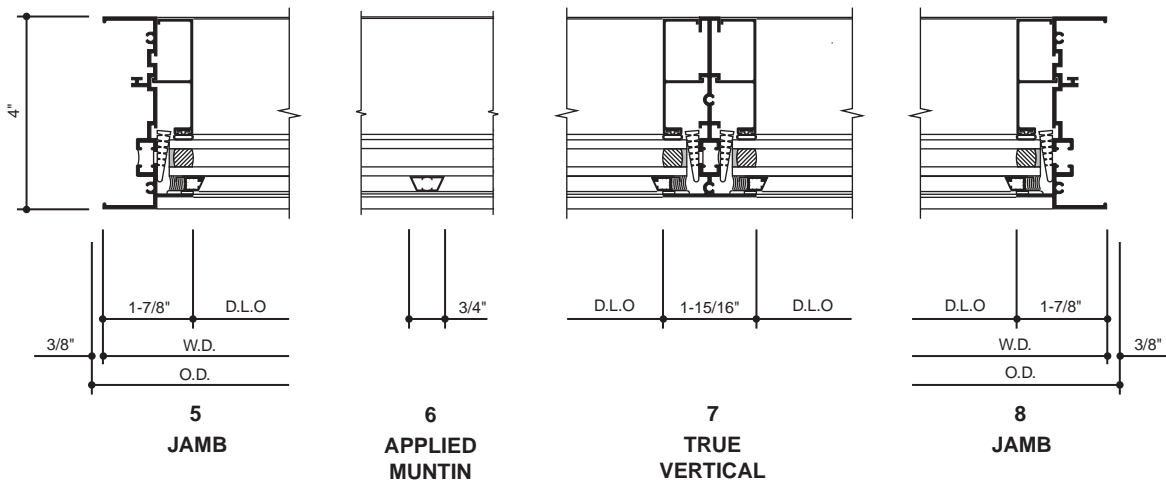
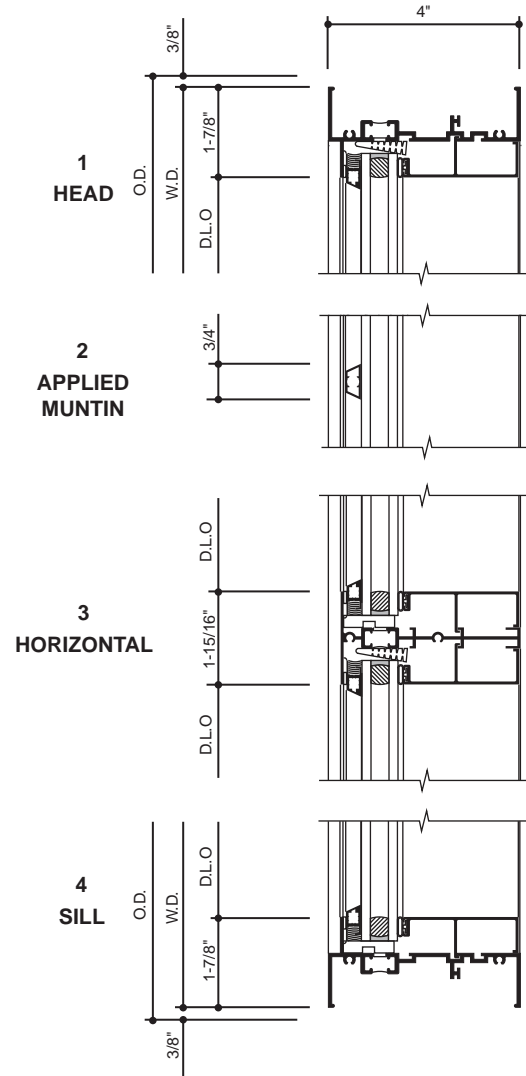
SCALE : 3" = 1'-0"

8410TL FIXED WINDOW
with Glazed-in Muntin Grid



TYPICAL ELEVATION

Log onto www.kawneer.com for other configurations

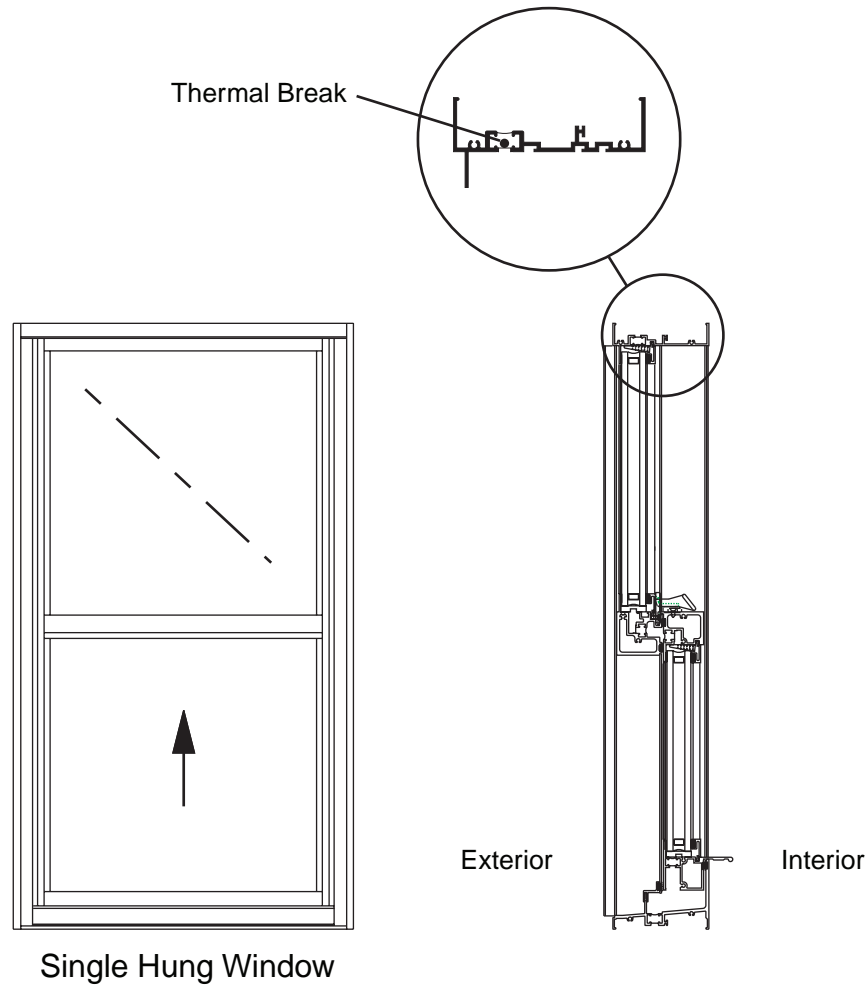


Laws and building and safety codes governing the design and use of glazed entrance, window, and curtain wall products vary widely. Kawneer does not control the selection of product configurations, operating hardware, or glazing materials, and assumes no responsibility therefor.

Kawneer reserves the right to change configuration without prior notice when deemed necessary for product improvement.
© Kawneer Company, Inc., 2011

Features

- Architectural Grade Window
- Series 8430TL Standard Design
- IsoLock™ Thermal Break
- Screw and Spline Frame and Sash Corner Joinery
- Factory Silicone Glazed
- Interior Applied Glazing Bead with Bulb Gasket
- Architectural Anodized Finishes and Applied Coatings
- Two Year Manufacturer's Warranty



For specific product applications,
Consult your Kawneer representative.

CLASS and GRADE	Architectural Grade Window H-HC70 / H-AW70 / AW-PG70-H					
TESTING STANDARD	AAMA / WDMA / CSA 101 / I.S. 2 / A440 (NAFS)					
FRAME DEPTH	4" Overall Frame Depth					
TYPICAL WALL THICKNESS	.070 Nominal					
TYPICAL MAXIMUM SIZE	60" x 99"					
TYPICAL MINIMUM SIZE	20" x 33"					
TYPICAL CONFIGURATIONS						
STANDARD INFILL OPTIONS	1/4", 3/4" with Glazed-in Muntin Grid, and 1"					
STANDARD HARDWARE	Heavy Duty Balances Cast White Bronze Sweep Locks					
OPTIONAL HARDWARE	Aluminum Auto Lock					
OTHER OPTIONS	Exterior Glazed-in Muntin Grids Perimeters and Sills Exterior Pannings and Interior Trims True Intermediate Mullions Structural Mullions Vertically or Horizontally Stacked Sill for 10 PSF or 15 PSF Water Performance Insect Screens					
PERFORMANCE	Air Infiltration Cfm/ft ²	Water Resistance PSF	Design Load PSF	Thermal Transmittance "U" Value	Condensation Resistance CRF	Sound Transmittance STC
	.30 @ 6.24 psf	10 / 15	70	.70	49	34

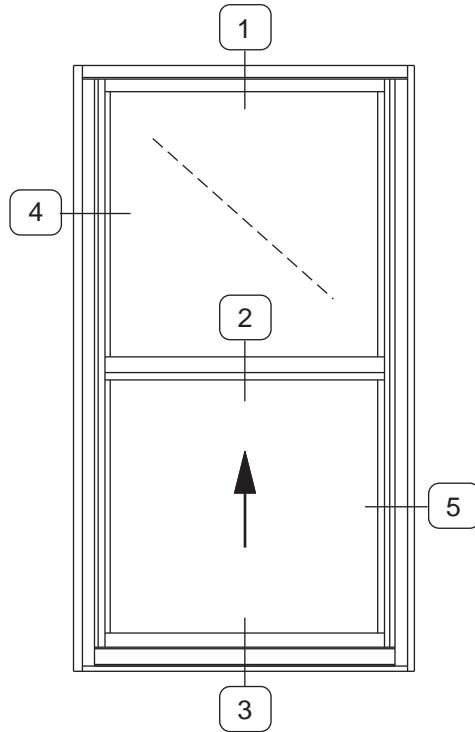
Note: Thermal and STC values are based upon 1" clear insulating glass.

Laws and building and safety codes governing the design and use of glazed entrance, window, and curtain wall products vary widely. Kawneer does not control the selection of product configurations, operating hardware, or glazing materials, and assumes no responsibility therefor.

Kawneer reserves the right to change configuration without prior notice when deemed necessary for product improvement.
© Kawneer Company, Inc., 2011

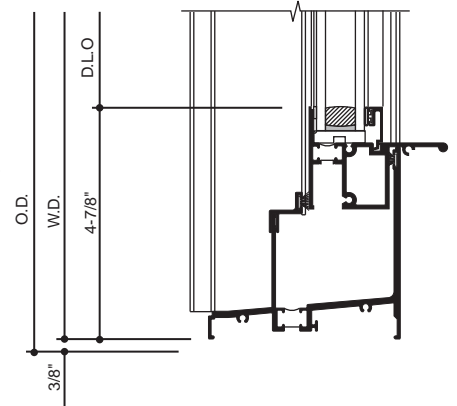
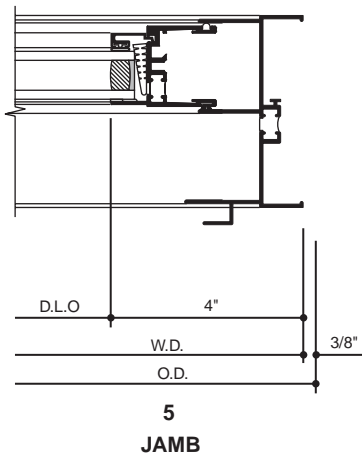
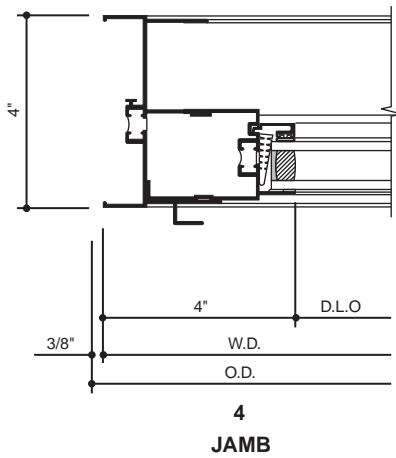
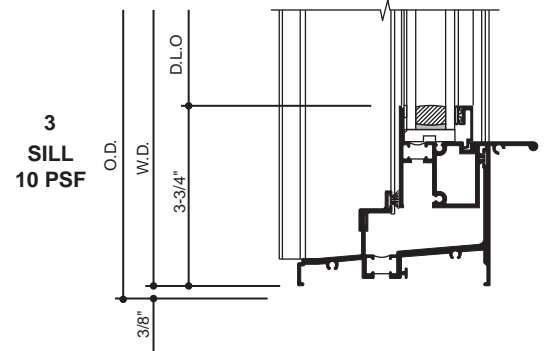
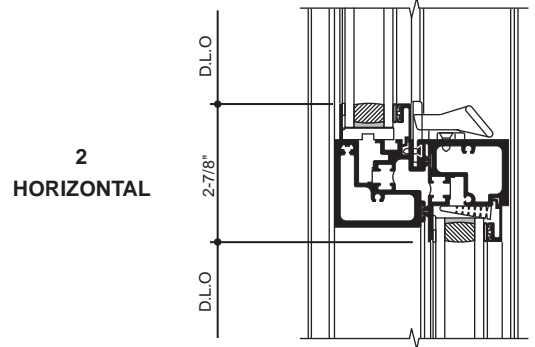
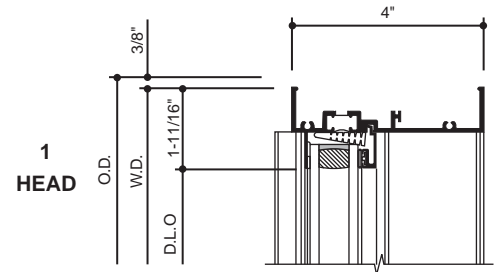
SCALE : 3" = 1'-0"

8430TL SINGLE HUNG WINDOW
 Standard Design



TYPICAL ELEVATION

Log onto www.kawneer.com for other configurations

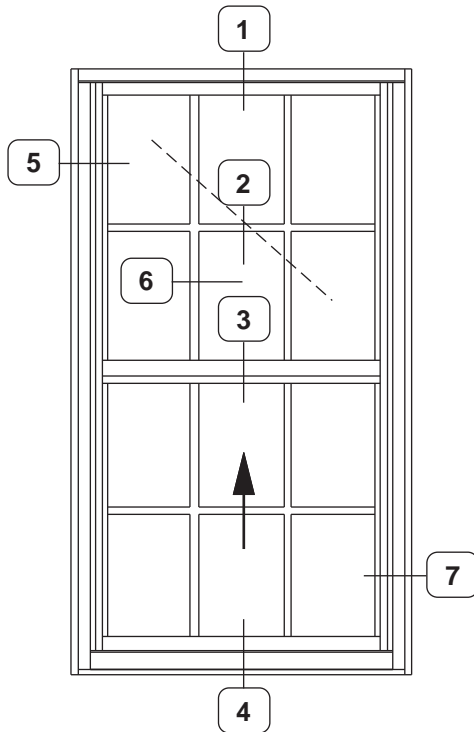


Laws and building and safety codes governing the design and use of glazed entrance, window, and curtain wall products vary widely. Kawneer does not control the selection of product configurations, operating hardware, or glazing materials, and assumes no responsibility therefor.

Kawneer reserves the right to change configuration without prior notice when deemed necessary for product improvement.
 © Kawneer Company, Inc., 2011

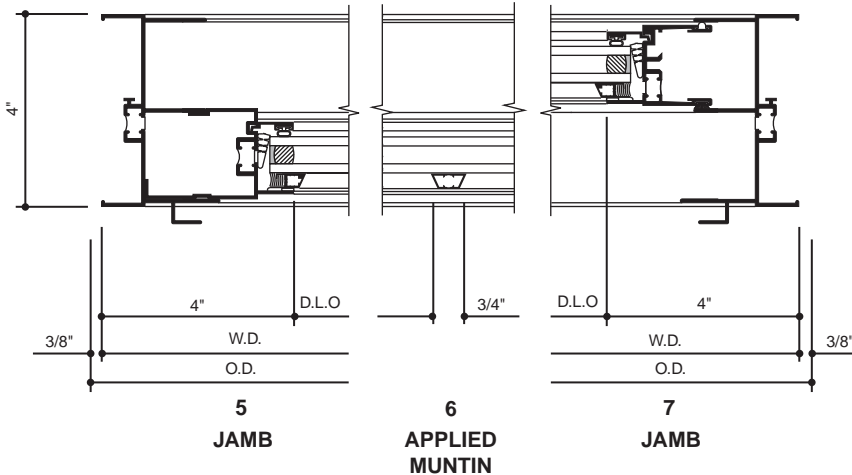
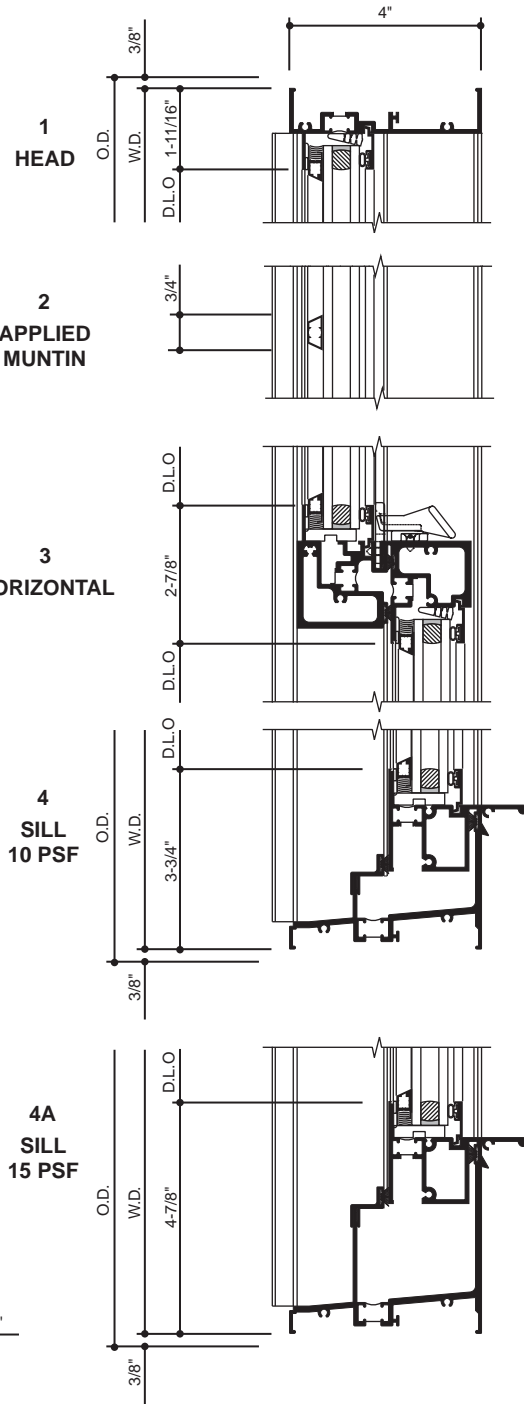
SCALE : 3" = 1'-0"

**8430TL SINGLE HUNG WINDOW
with Glazed-in Muntin Grid**



TYPICAL ELEVATION

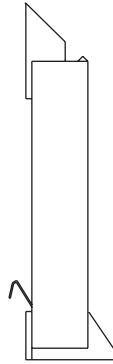
Log onto www.kawneer.com for other configurations



Laws and building and safety codes governing the design and use of glazed entrance, window, and curtain wall products vary widely. Kawneer does not control the selection of product configurations, operating hardware, or glazing materials, and assumes no responsibility therefor.

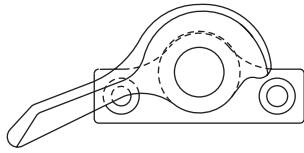
 Kawneer reserves the right to change configuration without prior notice when deemed necessary for product improvement.
 © Kawneer Company, Inc., 2011

HEAVY DUTY BLOCK AND TACKLE BALANCES



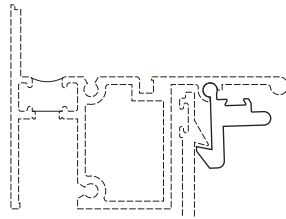
Heavy duty balances are concealed in the left and right jambs. Balances are sized according to sash dimensions and sash weight.

STANDARD SWEEP LOCK



Cast white bronze sweep locks and keepers secure the operating sash at the center meeting rails.

ALUMINUM AUTO LOCK



Aluminum auto locks are integral to the sash lift rail and used in lieu of cast white bronze auto locks. These locks are used in conjunction with sweep locks for additional security.

Laws and building and safety codes governing the design and use of glazed entrance, window, and curtain wall products vary widely. Kawneer does not control the selection of product configurations, operating hardware, or glazing materials, and assumes no responsibility therefor.

Kawneer reserves the right to change configuration without prior notice when deemed necessary for product improvement.
© Kawneer Company, Inc., 2011

Laws and building and safety codes governing the design and use of glazed entrance, window, and curtain wall products vary widely. Kawneer does not control the selection of product configurations, operating hardware, or glazing materials, and assumes no responsibility therefor.

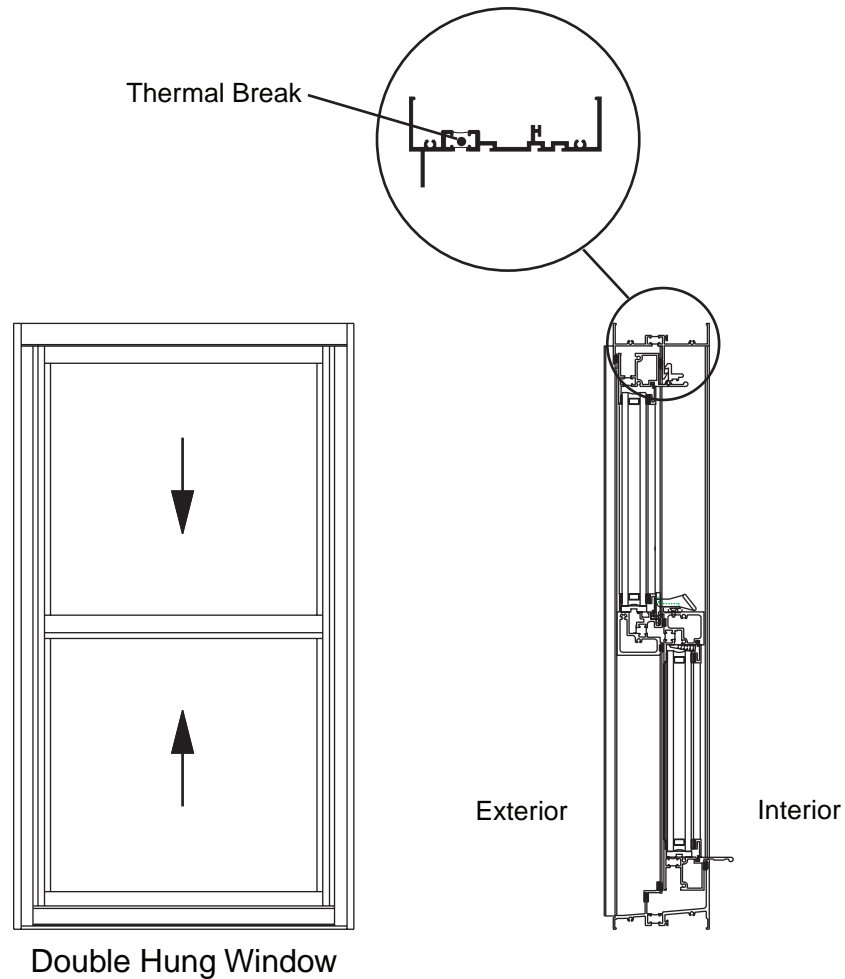
Kawneer reserves the right to change configuration without prior notice when deemed necessary for product improvement.
© Kawneer Company, Inc., 2011

Features

- Architectural Grade Window
- Series 8450TL Standard Design
- IsoLock™ Thermal Break
- Screw and Spline Frame and Sash Corner Joinery
- Factory Silicone Glazed
- Interior Applied Glazing Bead with Bulb Gasket
- Architectural Anodized Finishes and Applied Coatings
- Two Year Manufacturer's Warranty

Laws and building and safety codes governing the design and use of glazed entrance, window, and curtain wall products vary widely. Kawneer does not control the selection of product configurations, operating hardware, or glazing materials, and assumes no responsibility therefor.

Kawneer reserves the right to change configuration without prior notice when deemed necessary for product improvement.
© Kawneer Company, Inc., 2011



For specific product applications,
Consult your Kawneer representative.

CLASS and GRADE	Architectural Grade Window H-HC70 / H-AW70 / AW-PG70-H					
TESTING STANDARD	AAMA / WDMA / CSA 101 / I.S. 2 / A440 (NAFS)					
FRAME DEPTH	4" Overall Frame Depth					
TYPICAL WALL THICKNESS	.070 Nominal					
TYPICAL MAXIMUM SIZE	60" x 99"					
TYPICAL MINIMUM SIZE	20" x 33"					
TYPICAL CONFIGURATIONS						
STANDARD INFILL OPTIONS	1/4", 3/4" with Glazed-in Muntin Grid, and 1"					
STANDARD HARDWARE	Heavy Duty Balances Cast White Bronze Sweep Locks Aluminum Auto Lock (Upper Sash Only)					
OPTIONAL HARDWARE	Aluminum Auto Lock at Sill					
OTHER OPTIONS	Exterior Glazed-in Muntin Grids Perimeters and Sills Exterior Pannings and Interior Trims True Intermediate Mullions Structural Mullions Vertically or Horizontally Stacked Sill for 10 PSF or 15 PSF Water Performance Insect Screens					
PERFORMANCE	Air Infiltration Cfm/ft ²	Water Resistance PSF	Design Load PSF	Thermal Transmittance "U" Value	Condensation Resistance CRF	Sound Transmittance STC
	.30 @ 6.24 psf	10 / 15	70	.74	50	33

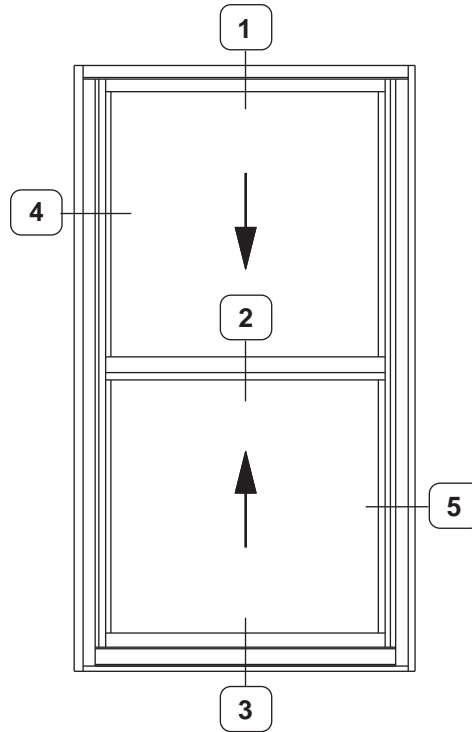
Note: Thermal and STC values are based upon 1" clear insulating glass.

Laws and building and safety codes governing the design and use of glazed entrance, window, and curtain wall products vary widely. Kawneer does not control the selection of product configurations, operating hardware, or glazing materials, and assumes no responsibility therefor.

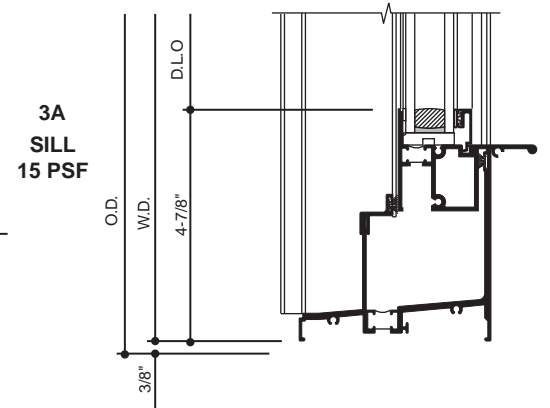
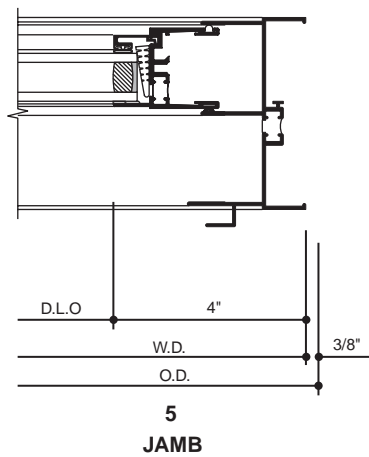
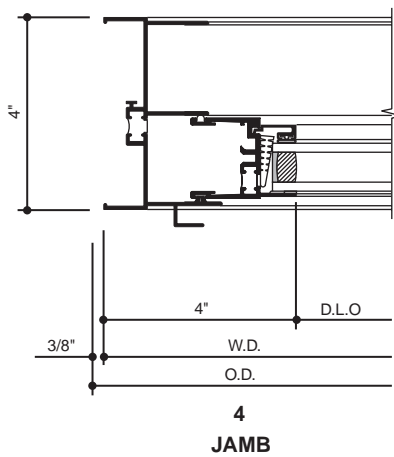
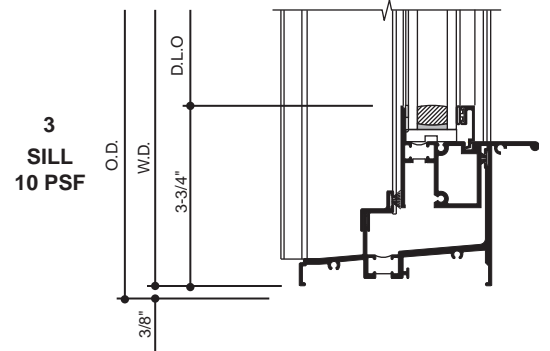
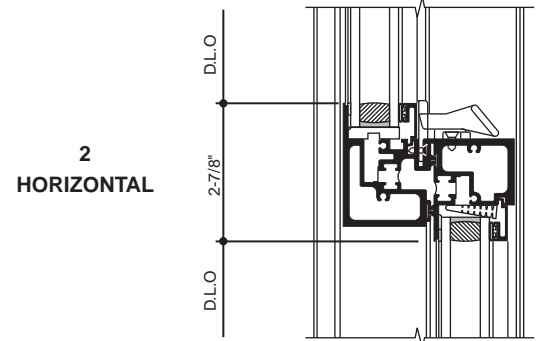
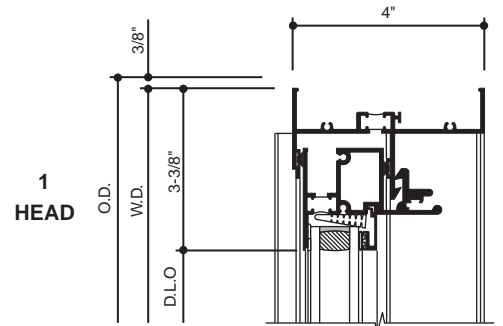
Kawneer reserves the right to change configuration without prior notice when deemed necessary for product improvement.
© Kawneer Company, Inc., 2011

SCALE : 3" = 1'-0"

8450TL DOUBLE HUNG WINDOW
 Standard Design



TYPICAL ELEVATION
 Log onto www.kawneer.com for other configurations

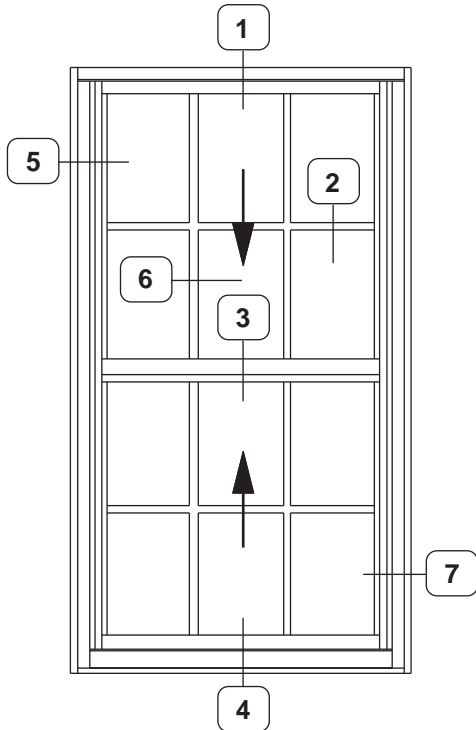


Laws and building and safety codes governing the design and use of glazed entrance, window, and curtain wall products vary widely. Kawneer does not control the selection of product configurations, operating hardware, or glazing materials, and assumes no responsibility therefor.

Kawneer reserves the right to change configuration without prior notice when deemed necessary for product improvement.
 © Kawneer Company, Inc., 2011

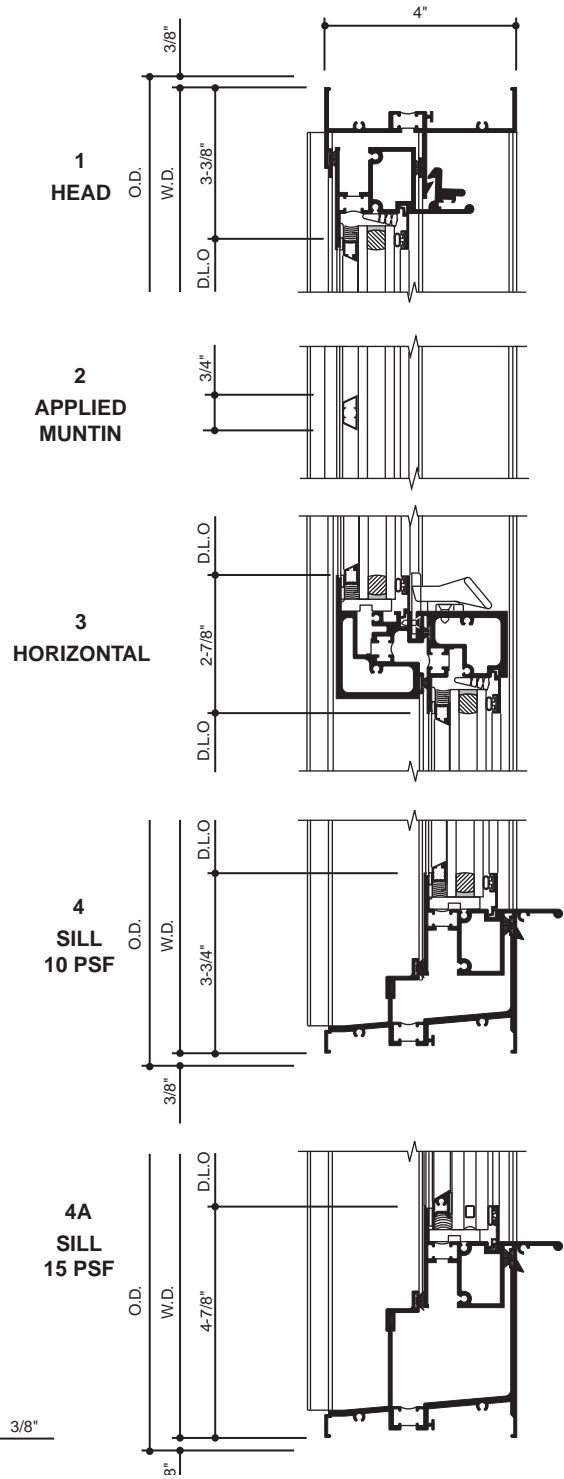
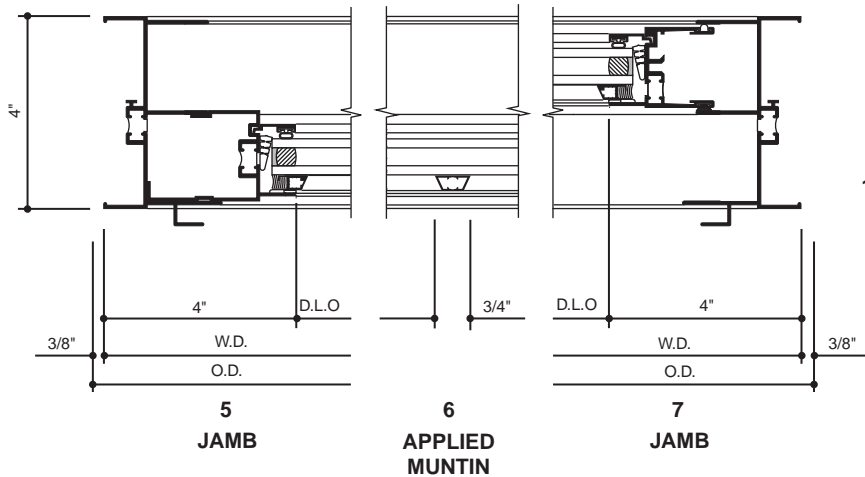
SCALE : 3" = 1'-0"

8450TL DOUBLE HUNG WINDOW
with Glazed-in Muntin Grid



TYPICAL ELEVATION

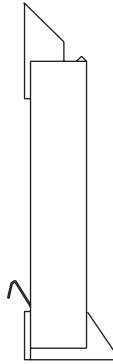
Log onto www.kawneer.com for other configurations



Laws and building and safety codes governing the design and use of glazed entrance, window, and curtain wall products vary widely. Kawneer does not control the selection of product configurations, operating hardware, or glazing materials, and assumes no responsibility therefor.

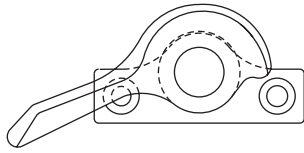
Kawneer reserves the right to change configuration without prior notice when deemed necessary for product improvement.
© Kawneer Company, Inc., 2011

HEAVY DUTY BLOCK AND TACKLE BALANCES



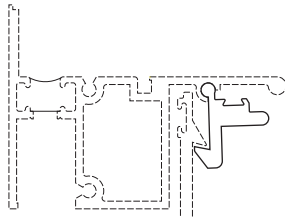
Heavy duty balances are concealed in the left and right jambs. Balances are sized according to sash dimensions and sash weight.

STANDARD SWEEP LOCK



Cast white bronze sweep locks and keepers secure the operating sash at the center meeting rails.

ALUMINUM AUTO LOCK



Aluminum auto locks are integral to the sash lift rail and used in lieu of cast white bronze auto locks. These locks are used in conjunction with sweep locks for additional security.

Laws and building and safety codes governing the design and use of glazed entrance, window, and curtain wall products vary widely. Kawneer does not control the selection of product configurations, operating hardware, or glazing materials, and assumes no responsibility therefor.

Kawneer reserves the right to change configuration without prior notice when deemed necessary for product improvement.
© Kawneer Company, Inc., 2011

Laws and building and safety codes governing the design and use of glazed entrance, window, and curtain wall products vary widely. Kawneer does not control the selection of product configurations, operating hardware, or glazing materials, and assumes no responsibility therefor.

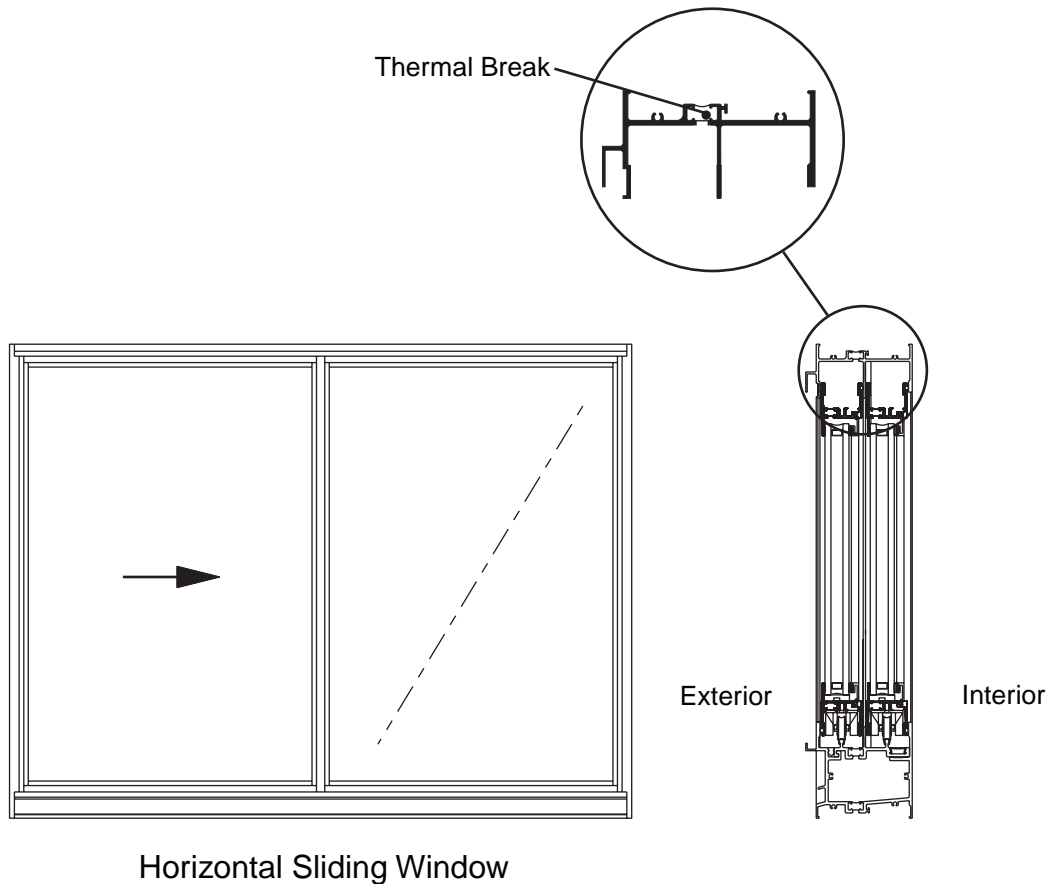
Kawneer reserves the right to change configuration without prior notice when deemed necessary for product improvement.
© Kawneer Company, Inc., 2011

Features

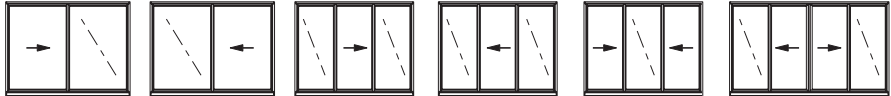
- Architectural Grade Window
- Series 8470TL Standard Design
- IsoLock™ Thermal Break
- Screw and Spline Frame and Sash Corner Joinery
- Factory Silicone Glazed
- Interior Applied Glazing Bead with Bulb Gasket
- Architectural Anodized Finishes and Applied Coatings
- Two Year Manufacturer's Warranty

Laws and building and safety codes governing the design and use of glazed entrance, window, and curtain wall products vary widely. Kawneer does not control the selection of product configurations, operating hardware, or glazing materials, and assumes no responsibility therefor.

Kawneer reserves the right to change configuration without prior notice when deemed necessary for product improvement.
© Kawneer Company, Inc., 2011



For specific product applications,
Consult your Kawneer representative.

CLASS and GRADE	Architectural Grade Window HS-HC70 / HS-AW70 / AW-PG70-HS					
TESTING STANDARD	AAMA / WDMA / CSA 101 / I.S. 2 / A440 (NAFS)					
FRAME DEPTH	4" Overall Frame Depth					
TYPICAL WALL THICKNESS	.070 to .125 Nominal					
TYPICAL MAXIMUM SIZE	99" x 79" (OX,XO,XX) 148" x 79" (OXO,XOX) 198" x 79" (OXXO)					
TYPICAL MINIMUM SIZE	32" x 20" (OX,XO,XX) 48" x 20" (OXO,XOX) 64" x 20" (OXXO)					
TYPICAL CONFIGURATIONS						
STANDARD INFILL OPTIONS	1/4", 3/4" with Glazed-in Muntin Grid, and 1"					
STANDARD HARDWARE	Steel Roller Assembly Cast White Bronze Sweep Locks					
OPTIONAL HARDWARE	Aluminum Auto Lock					
OTHER OPTIONS	Exterior Glazed-in Muntin Grids Perimeters and Sills Exterior Pannings and Interior Trims True Intermediate Mullions Structural Mullions Vertically or Horizontally Stacked Sill for 10 PSF or 15 PSF Water Performance Insect Screens Standard and Heavy Duty Interlock					
PERFORMANCE	Air Infiltration Cfm/ft ²	Water Resistance PSF	Design Load PSF	Thermal Transmittance "U" Value	Condensation Resistance CRF	Sound Transmittance STC
	.30 @ 6.24 psf	10 / 15	70	.74	51	34

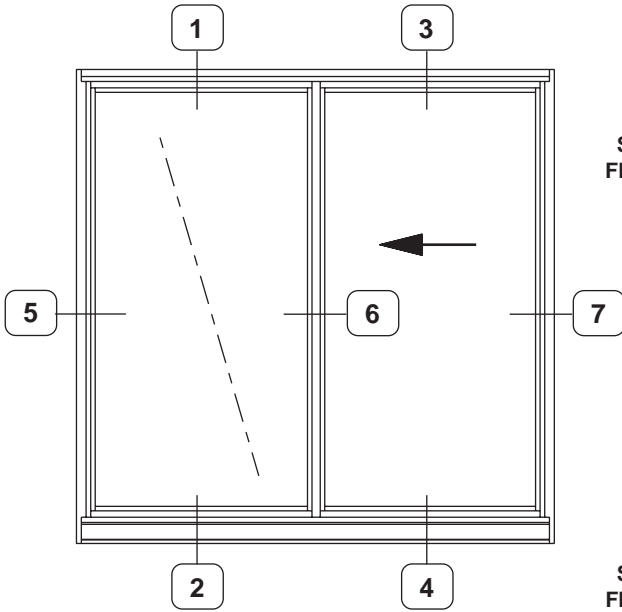
Note: Thermal and STC values are based upon 1" clear insulating glass.

Laws and building and safety codes governing the design and use of glazed entrance, window, and curtain wall products vary widely. Kawneer does not control the selection of product configurations, operating hardware, or glazing materials, and assumes no responsibility therefor.

Kawneer reserves the right to change configuration without prior notice when deemed necessary for product improvement.
© Kawneer Company, Inc., 2011

SCALE : 3" = 1'-0"

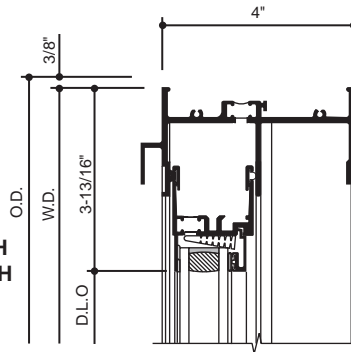
8470TL HORIZONTAL SLIDER
 Standard Design



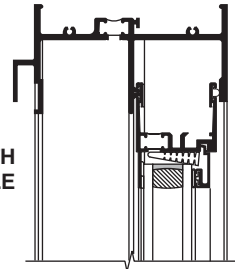
TYPICAL ELEVATION

Log onto www.kawneer.com for other configurations

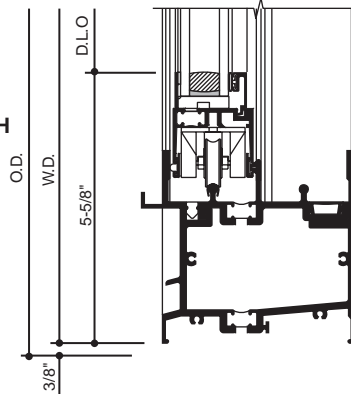
1
 HEAD WITH
 FIXED SASH



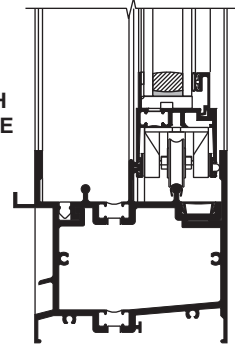
3
 HEAD WITH
 OPERABLE
 SASH



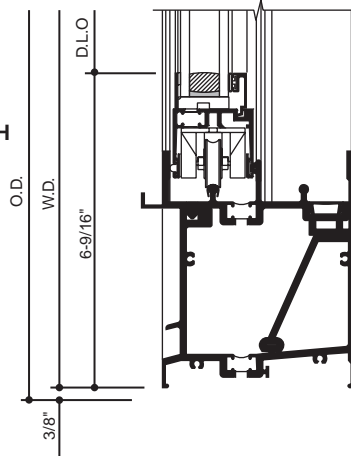
2
 SILL WITH
 FIXED SASH
 (10 PSF)



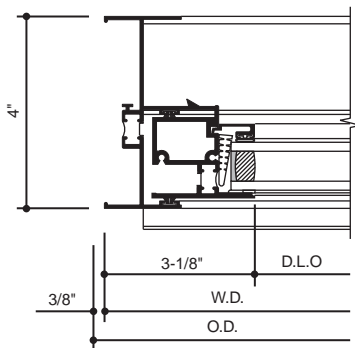
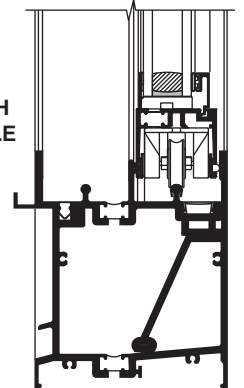
4
 SILL WITH
 OPERABLE
 SASH
 (10 PSF)



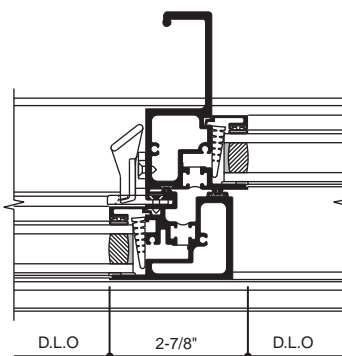
2A
 SILL WITH
 FIXED SASH
 (15 PSF)



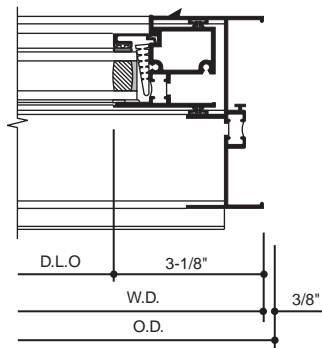
4A
 SILL WITH
 OPERABLE
 SASH
 (15 PSF)



5
 FIXED SASH
 JAMB



6
 INTERLOCK



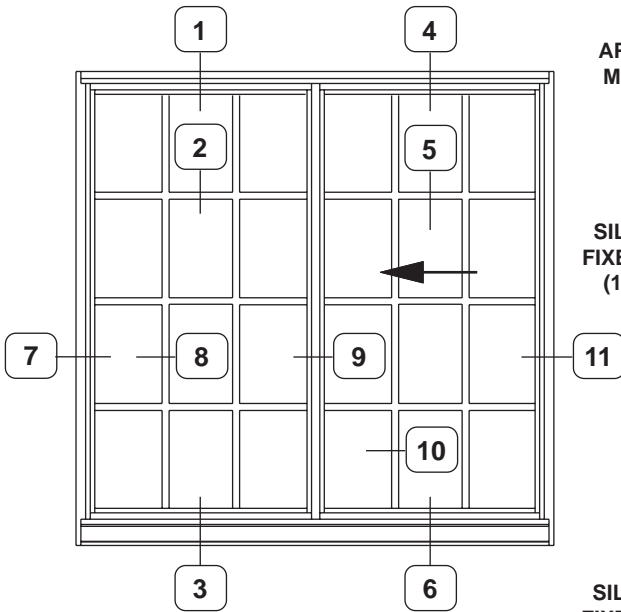
7
 OPERABLE SASH
 JAMB

Laws and building and safety codes governing the design and use of glazed entrance, window, and curtain wall products vary widely. Kawneer does not control the selection of product configurations, operating hardware, or glazing materials, and assumes no responsibility therefor.

Kawneer reserves the right to change configuration without prior notice when deemed necessary for product improvement.
 © Kawneer Company, Inc., 2011

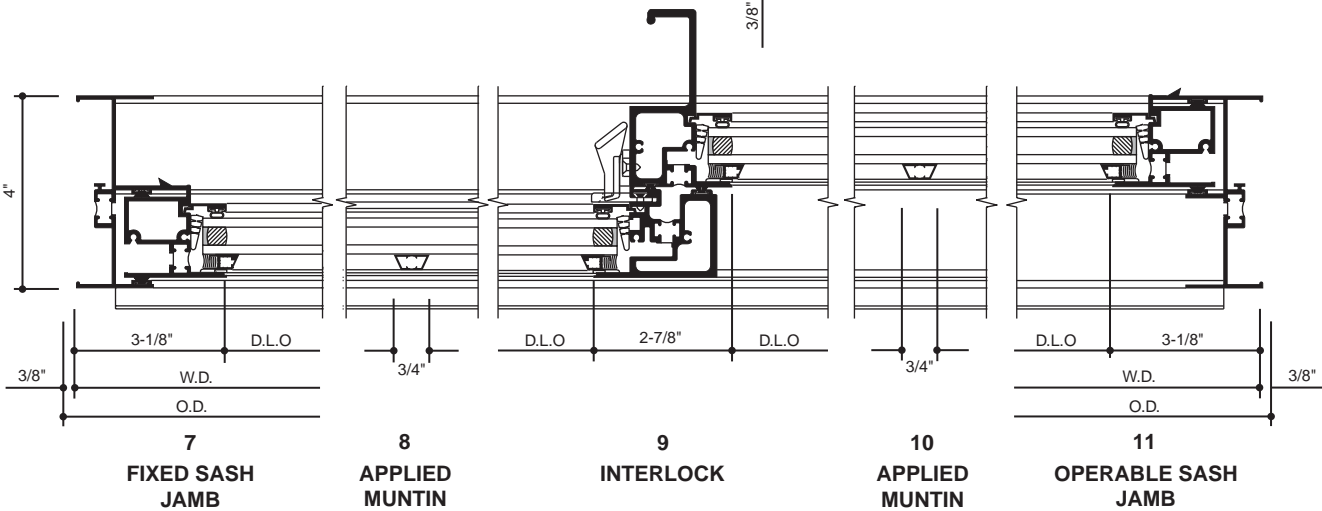
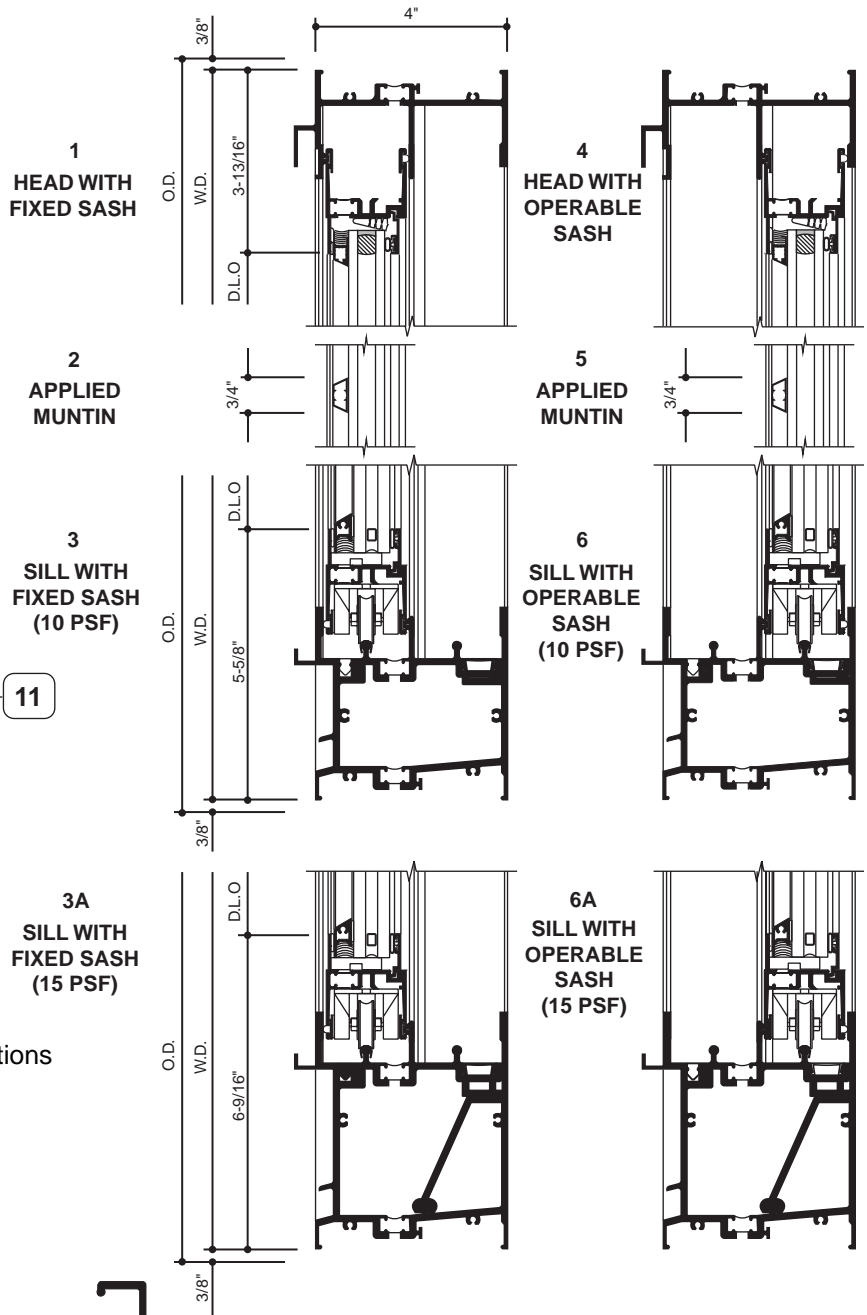
SCALE : 3" = 1'-0"

8470TL HORIZONTAL SLIDER with Glazed-in Muntin Grid



TYPICAL ELEVATION

Log onto www.kawneer.com for other configurations

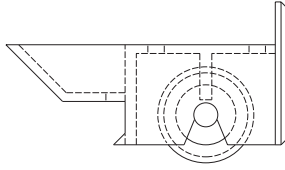


Laws and building and safety codes governing the design and use of glazed entrance, window, and curtain wall products vary widely. Kawneer does not control the selection of product configurations, operating hardware, or glazing materials, and assumes no responsibility therefor.

Kawneer reserves the right to change configuration without prior notice when deemed necessary for product improvement.
© Kawneer Company, Inc., 2011

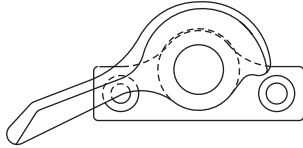
STEEL ROLLER ASSEMBLY

Steel ball bearing roller and glass filled nylon housing provide smooth and lasting operation.



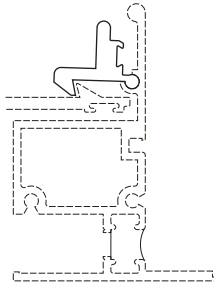
STANDARD SWEEP LOCK

Cast white bronze sweep locks and keepers secure the operating sash at the center meeting rails.



ALUMINUM AUTO LOCK

Aluminum auto locks are integral to the handle rail. These locks are used in conjunction with sweep locks for additional security.



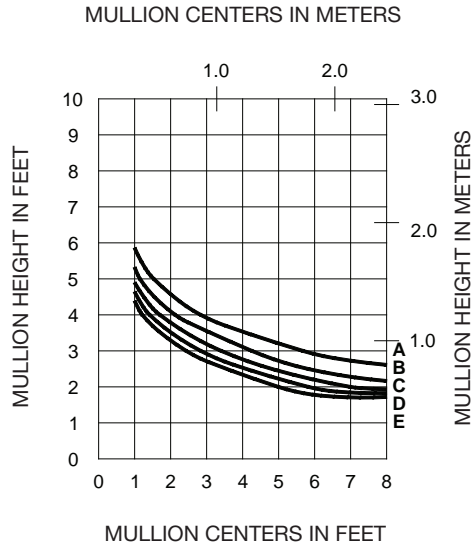
Laws and building and safety codes governing the design and use of glazed entrance, window, and curtain wall products vary widely. Kawneer does not control the selection of product configurations, operating hardware, or glazing materials, and assumes no responsibility therefor.

Kawneer reserves the right to change configuration without prior notice when deemed necessary for product improvement.
© Kawneer Company, Inc., 2011

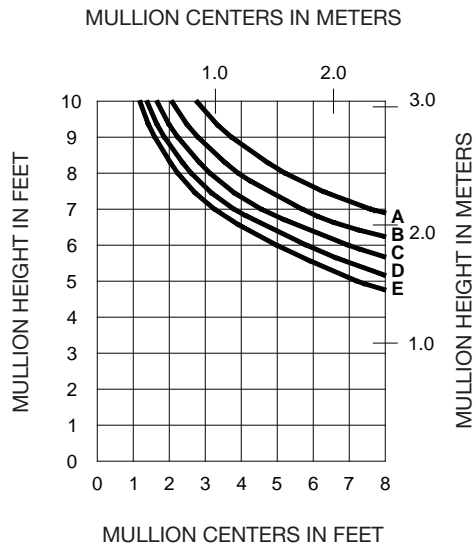
WIND LOAD CHARTS:

THESE CHARTS ARE BASED ON A MAXIMUM DEFLECTION OF L\175 AND/OR A MAXIMUM STRESS OF 15,152 PSI (104 MPa).

- A = 30 PSF (1436)
- B = 40 PSF (1915)
- C = 50 PSF (2394)
- D = 60 PSF (2874)
- E = 70 PSF (3352)

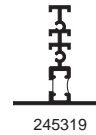


WITH HORIZONTALS

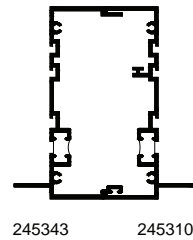


WITH HORIZONTALS

VERTICAL MULLION



**8410
FIXED WINDOW**



Laws and building and safety codes governing the design and use of glazed entrance, window, and curtain wall products vary widely. Kawneer does not control the selection of product configurations, operating hardware, or glazing materials, and assumes no responsibility therefor.

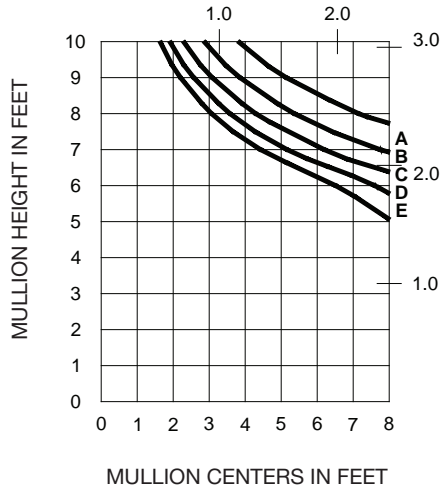
Kawneer reserves the right to change configuration without prior notice when deemed necessary for product improvement.
© Kawneer Company, Inc., 2011

WIND LOAD CHARTS:

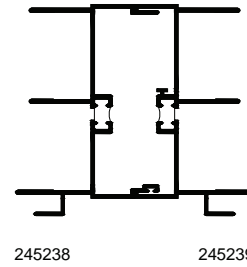
THESE CHARTS ARE BASED ON A MAXIMUM DEFLECTION OF L\175 AND/OR A MAXIMUM STRESS OF 15,152 PSI (104 MPa).

- A = 30 PSF (1436)
- B = 40 PSF (1915)
- C = 50 PSF (2394)
- D = 60 PSF (2874)
- E = 70 PSF (3352)

MULLION CENTERS IN METERS



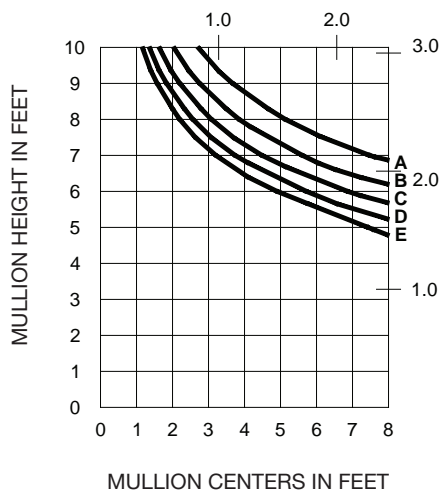
8430 SINGLE HUNG
8450 DOUBLE HUNG



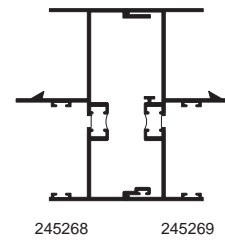
MULLION CENTERS IN FEET

WITH HORIZONTALS

MULLION CENTERS IN METERS



8470
HORIZONTAL SLIDER



MULLION CENTERS IN FEET

WITH HORIZONTALS

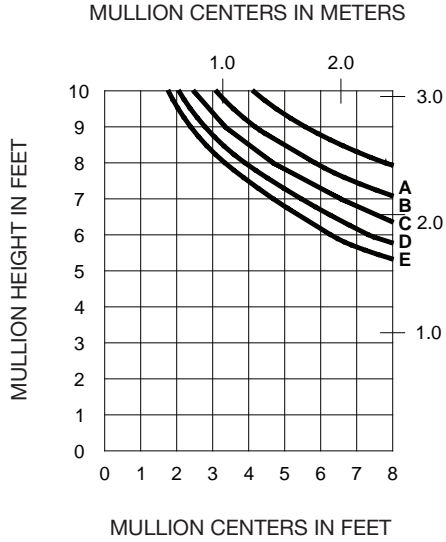
Laws and building and safety codes governing the design and use of glazed entrance, window, and curtain wall products vary widely. Kawneer does not control the selection of product configurations, operating hardware, or glazing materials, and assumes no responsibility therefor.

Kawneer reserves the right to change configuration without prior notice when deemed necessary for product improvement.
© Kawneer Company, Inc., 2011

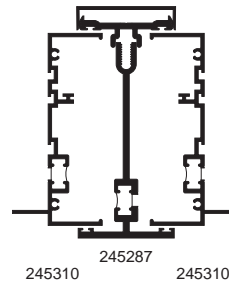
WIND LOAD CHARTS:

THESE CHARTS ARE BASED ON A MAXIMUM DEFLECTION OF L/175 AND/OR A MAXIMUM STRESS OF 15,152 PSI (104 MPa).

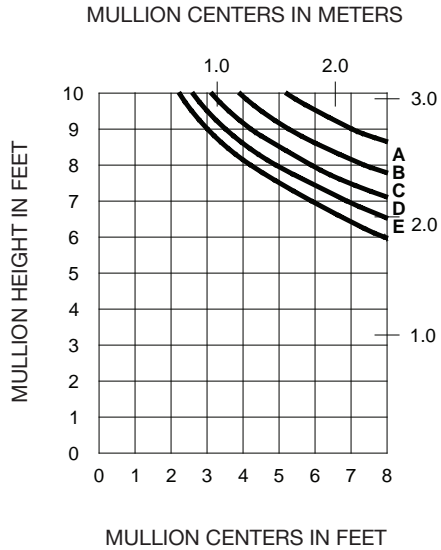
- A = 30 PSF (1436)
- B = 40 PSF (1915)
- C = 50 PSF (2394)
- D = 60 PSF (2874)
- E = 70 PSF (3352)



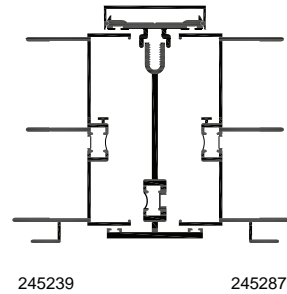
8410 FIXED WINDOW



WITH HORIZONTALS



**8430 SINGLE HUNG
8450 DOUBLE HUNG**



WITH HORIZONTALS

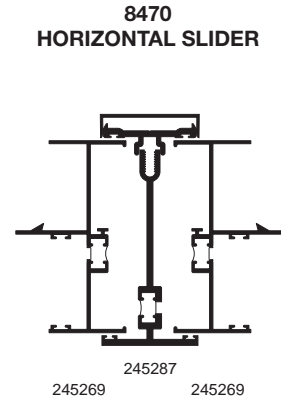
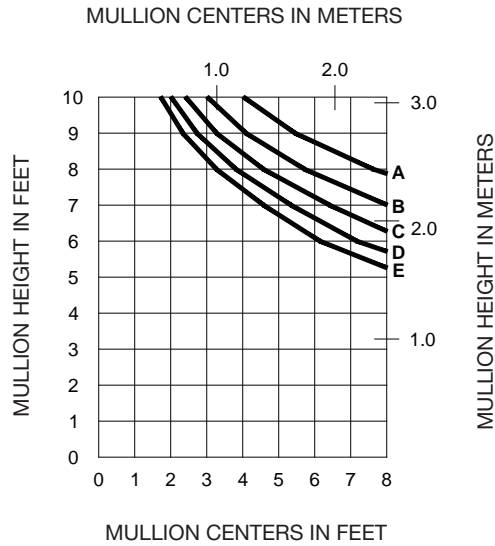
Laws and building and safety codes governing the design and use of glazed entrance, window, and curtain wall products vary widely. Kawneer does not control the selection of product configurations, operating hardware, or glazing materials, and assumes no responsibility therefor.

Kawneer reserves the right to change configuration without prior notice when deemed necessary for product improvement.
© Kawneer Company, Inc., 2011

WIND LOAD CHARTS:

THESE CHARTS ARE BASED ON A MAXIMUM DEFLECTION OF L\175 AND/OR A MAXIMUM STRESS OF 15,152 PSI (104 MPa).

- A = 30 PSF (1436)
- B = 40 PSF (1915)
- C = 50 PSF (2394)
- D = 60 PSF (2874)
- E = 70 PSF (3352)

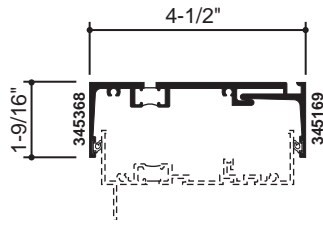


WITH HORIZONTALS

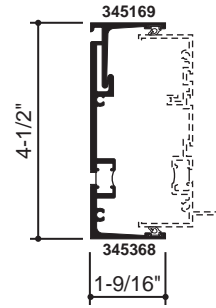
Laws and building and safety codes governing the design and use of glazed entrance, window, and curtain wall products vary widely. Kawneer does not control the selection of product configurations, operating hardware, or glazing materials, and assumes no responsibility therefor.

Kawneer reserves the right to change configuration without prior notice when deemed necessary for product improvement.
© Kawneer Company, Inc., 2011

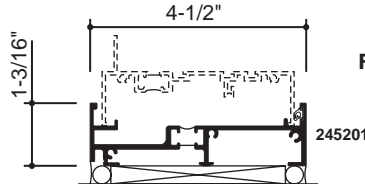
SCALE : 3" = 1'-0"



HEAD RECEPTOR

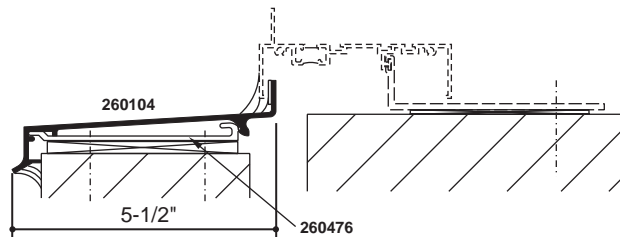
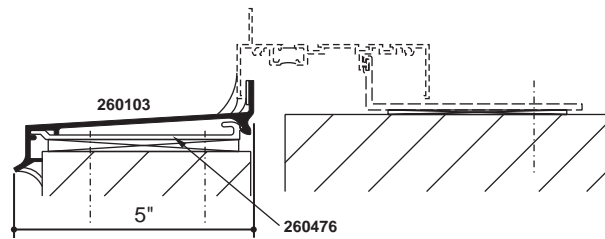
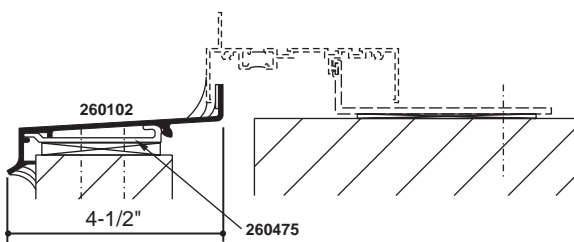
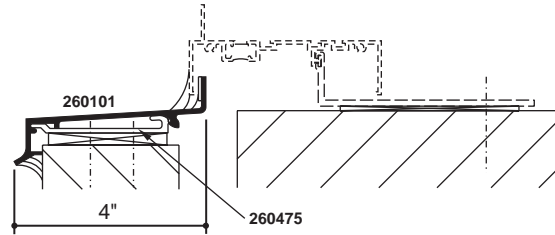
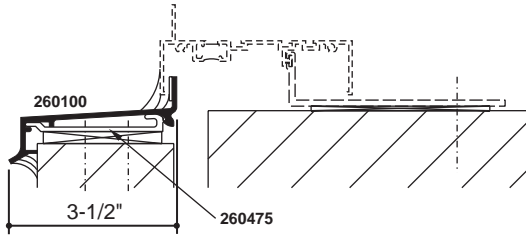


JAMB RECEPTOR



FULL DEPTH SILL

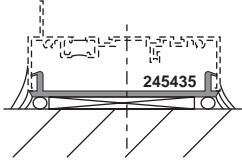
SUB SILLS



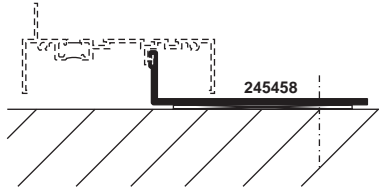
Laws and building and safety codes governing the design and use of glazed entrance, window, and curtain wall products vary widely. Kawneer does not control the selection of product configurations, operating hardware, or glazing materials, and assumes no responsibility therefor.

Kawneer reserves the right to change configuration without prior notice when deemed necessary for product improvement.
© Kawneer Company, Inc., 2011

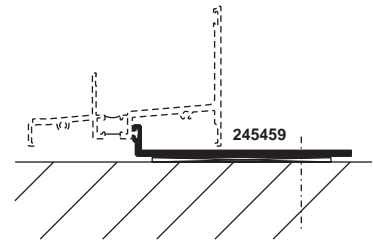
SCALE : 3" = 1'-0"



PVC PERIMETER
(Head and Jamb Similar)



STRAP ANCHOR
WITH FIXED WINDOW

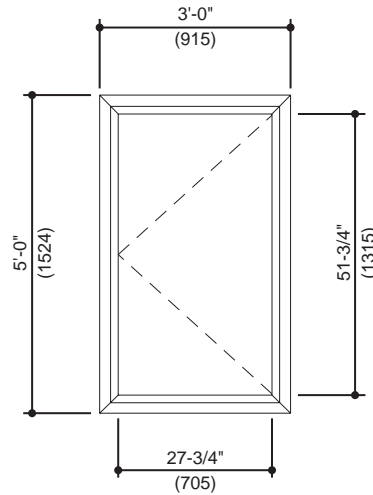


STRAP ANCHOR
WITH HUNG WINDOW

Laws and building and safety codes governing the design and use of glazed entrance, window, and curtain wall products vary widely. Kawneer does not control the selection of product configurations, operating hardware, or glazing materials, and assumes no responsibility therefor.

Kawneer reserves the right to change configuration without prior notice when deemed necessary for product improvement.
© Kawneer Company, Inc., 2011

Generic Project Specific U-factor Example Calculation
 (Percent of Glass will vary on specific products depending on sitelines)



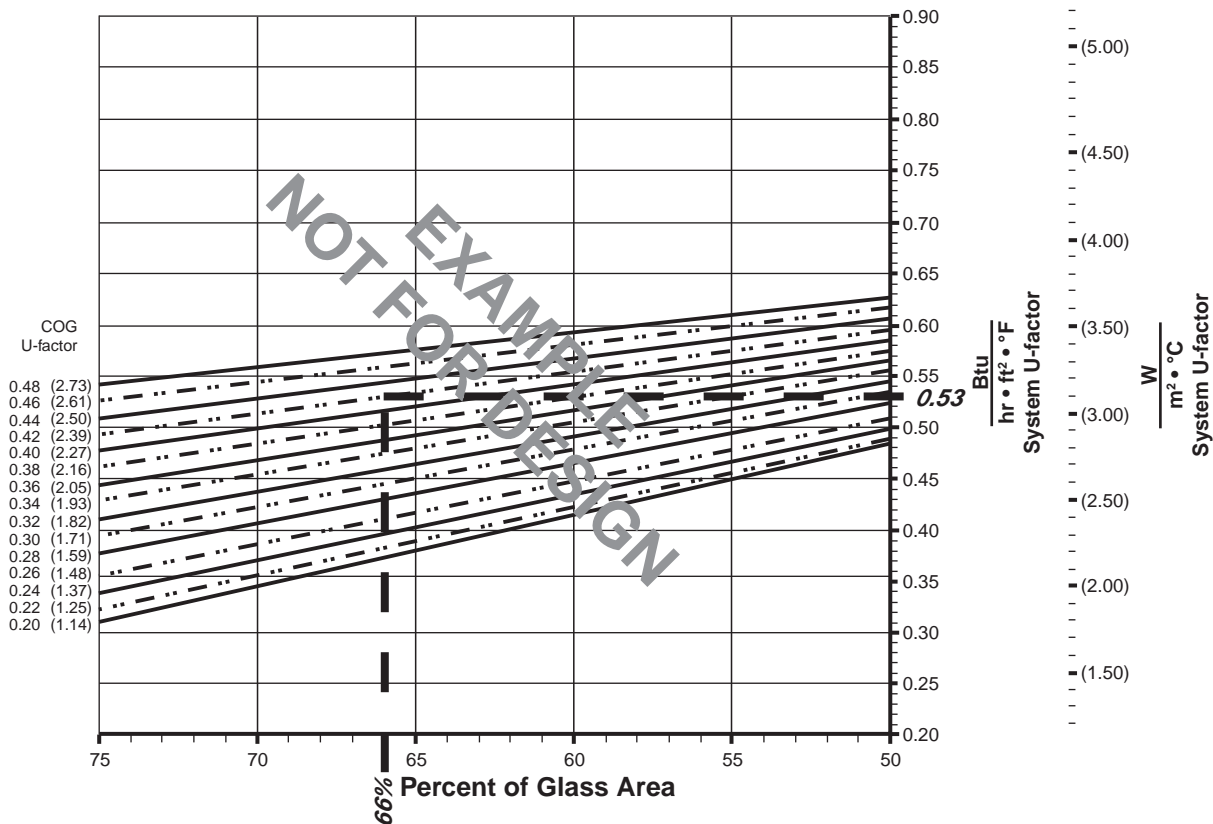
Example Glass U-Factor = 0.42 Btu/hr • ft² • °F

Total Daylight Opening = 27-3/4" • 51-3/4" = 9.97ft²

Total Projected Area = 3'-0" • 5'-0" = 15 ft²

Percent of Glass = (Total Daylight Opening ÷ Total Projected Area)100
 = (9.97 ÷ 15)100 = 66%

System U-factor vs Percent of Glass Area



Based on 66% glass and center of glass (COG) U-factor of 0.42
 System U-factor is equal to 0.53 Btu/hr • ft² • °F

Laws and building and safety codes governing the design and use of glazed entrance, window, and curtain wall products vary widely. Kawneer does not control the selection of product configurations, operating hardware, or glazing materials, and assumes no responsibility therefor.

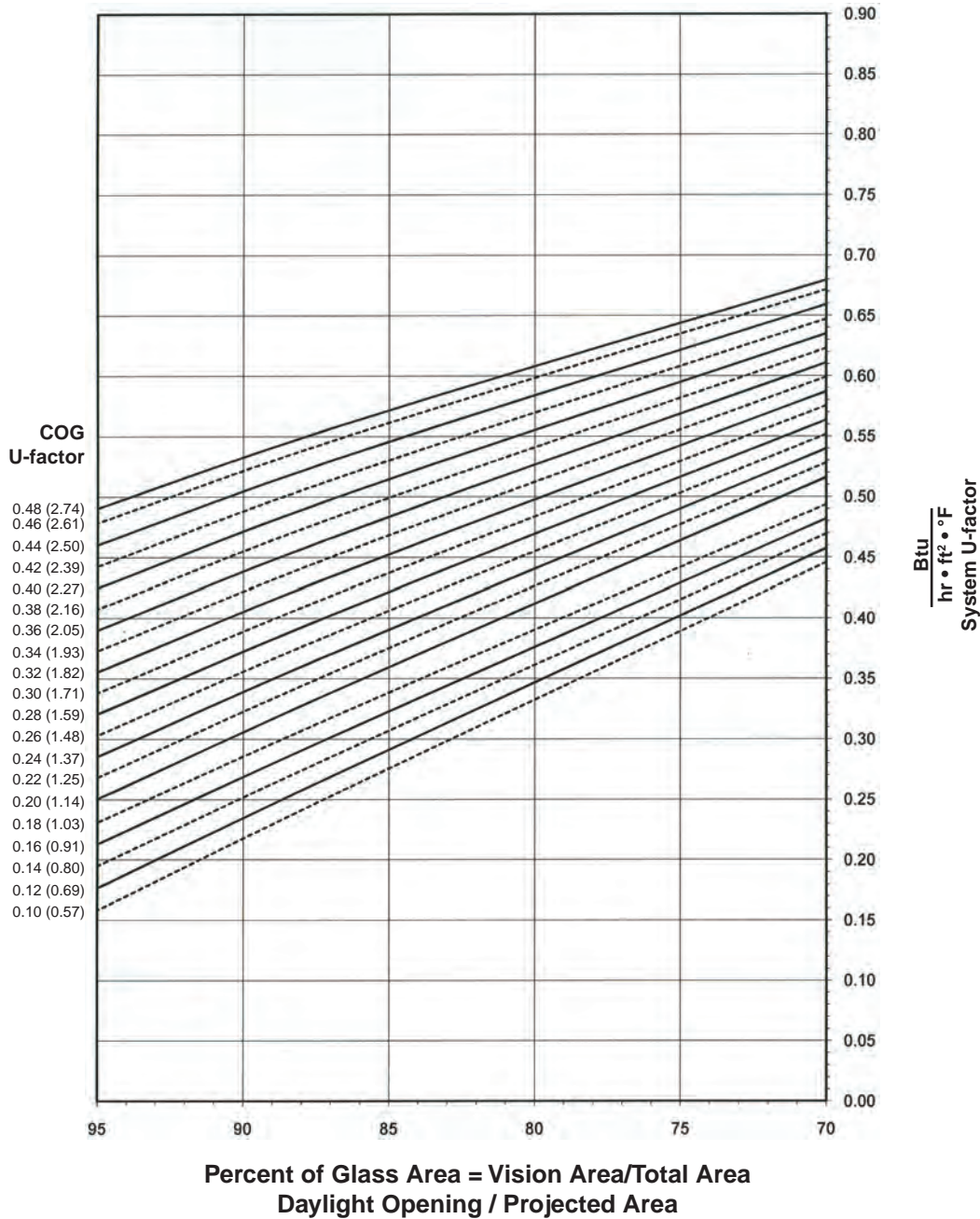
Kawneer reserves the right to change configuration without prior notice when deemed necessary for product improvement.
 © Kawneer Company, Inc., 2011

FIXED WINDOW WITH 1" GLAZING

Note:

Values in parentheses are metric.
 COG = Center of Glass.
 Charts are generated per AMMA 507

System U-factor vs Percent of Glass Area



Notes for System U-factor, SHGC and VT charts:

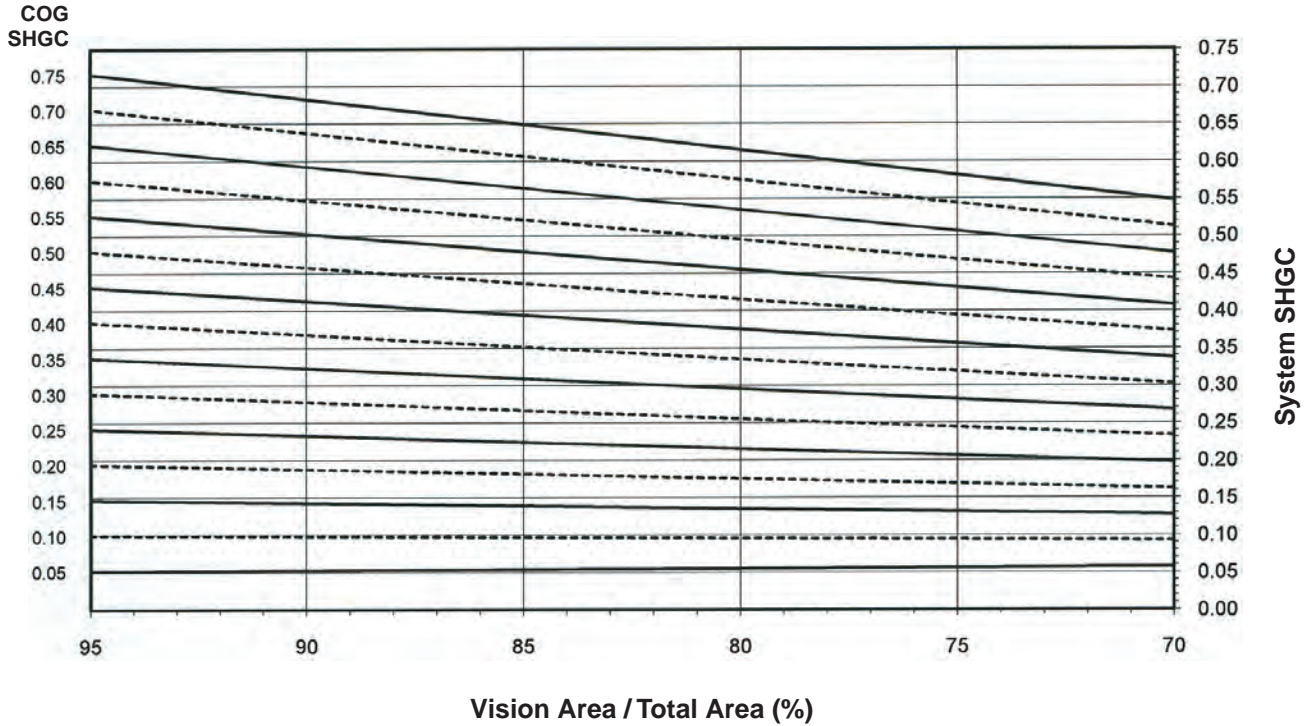
For glass values that are not listed, linear interpolation is permitted.
 Glass properties are based on center of glass values and are obtained from your glass supplier.

Laws and building and safety codes governing the design and use of glazed entrance, window, and curtain wall products vary widely. Kawneer does not control the selection of product configurations, operating hardware, or glazing materials, and assumes no responsibility therefor.

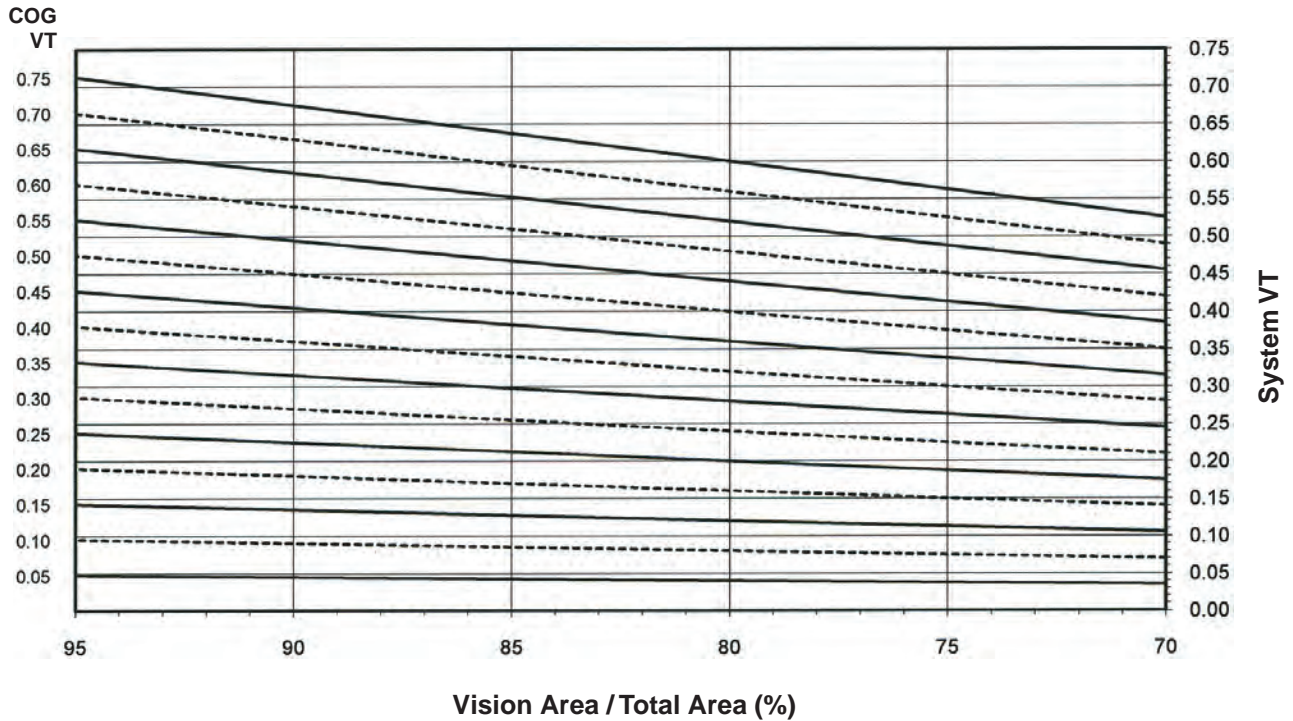
Kawneer reserves the right to change configuration without prior notice when deemed necessary for product improvement.
 © Kawneer Company, Inc., 2011

FIXED WINDOW WITH 1" GLAZING

System Solar Heat Gain Coefficient (SHGC) vs Percent of Vision Area



System Visible Transmittance (VT) vs Percent of Vision Area



Laws and building and safety codes governing the design and use of glazed entrance, window, and curtain wall products vary widely. Kawneer does not control the selection of product configurations, operating hardware, or glazing materials, and assumes no responsibility therefor.

Kawneer reserves the right to change configuration without prior notice when deemed necessary for product improvement.
© Kawneer Company, Inc., 2011

Thermal Transmittance ¹ (BTU/hr • ft ² • °F)

Glass U-Factor ³	Overall U-Factor ⁴
0.48	0.56
0.46	0.55
0.44	0.54
0.42	0.52
0.40	0.50
0.38	0.49
0.36	0.47
0.34	0.46
0.32	0.44
0.30	0.43
0.28	0.41
0.26	0.39
0.24	0.38
0.22	0.36
0.20	0.35
0.18	0.33
0.16	0.31
0.14	0.29
0.12	0.28
0.10	0.26

FIXED WINDOW WITH 1" GLAZING

NOTE: For glass values that are not listed, linear interpolation is permitted.

1. U-Factors are determined in accordance with NFRC 100.
2. SHGC and VT values are determined in accordance with NFRC 200.
3. Glass properties are based on center of glass values and are obtained from your glass supplier.
4. Overall U-Factor, SHGC, and VT Matricies are based on the standard NFRC specimen size of 1200mm wide by 1500mm high (47-1/4" by 59-1/16").

SHGC Matrix ²

Glass SHGC ³	Overall SHGC ⁴
0.75	0.66
0.70	0.61
0.65	0.57
0.60	0.53
0.55	0.48
0.50	0.44
0.45	0.40
0.40	0.36
0.35	0.31
0.30	0.27
0.25	0.23
0.20	0.18
0.15	0.14
0.10	0.10
0.05	0.05

Visible Transmittance ²

Glass VT ³	Overall VT ⁴
0.75	0.65
0.70	0.60
0.65	0.56
0.60	0.52
0.55	0.47
0.50	0.43
0.45	0.39
0.40	0.34
0.35	0.30
0.30	0.26
0.25	0.22
0.20	0.17
0.15	0.13
0.10	0.09
0.05	0.04

Laws and building and safety codes governing the design and use of glazed entrance, window, and curtain wall products vary widely. Kawneer does not control the selection of product configurations, operating hardware, or glazing materials, and assumes no responsibility therefor.

Kawneer reserves the right to change configuration without prior notice when deemed necessary for product improvement.
© Kawneer Company, Inc., 2011

SINGLE HUNG VERTICAL SLIDER WITH 1" GLAZING

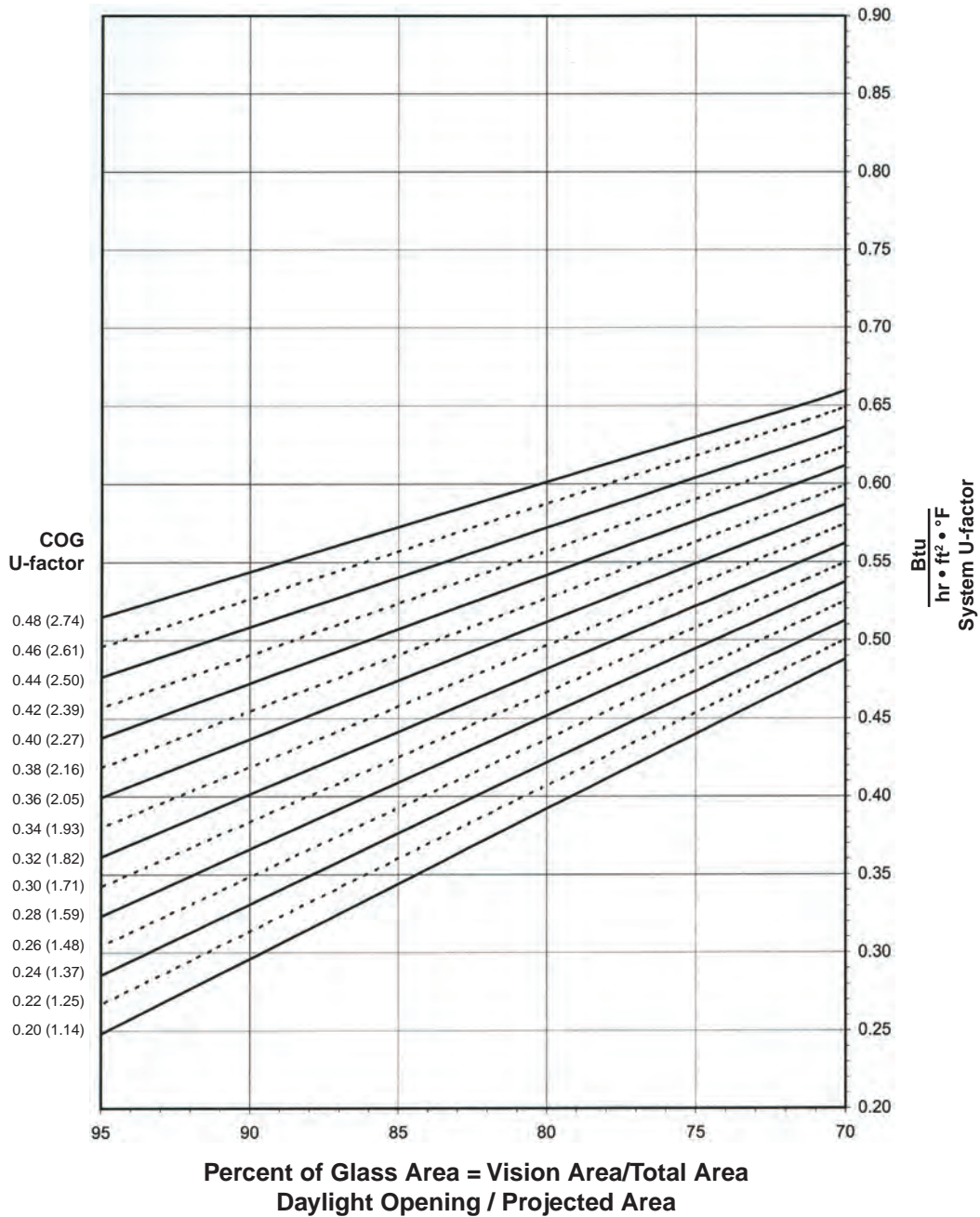
Note:

Values in parentheses are metric.

COG = Center of Glass.

Charts are generated per AMMA 507

System U-factor vs Percent of Glass Area



Notes for System U-factor, SHGC and VT charts:

For glass values that are not listed, linear interpolation is permitted.

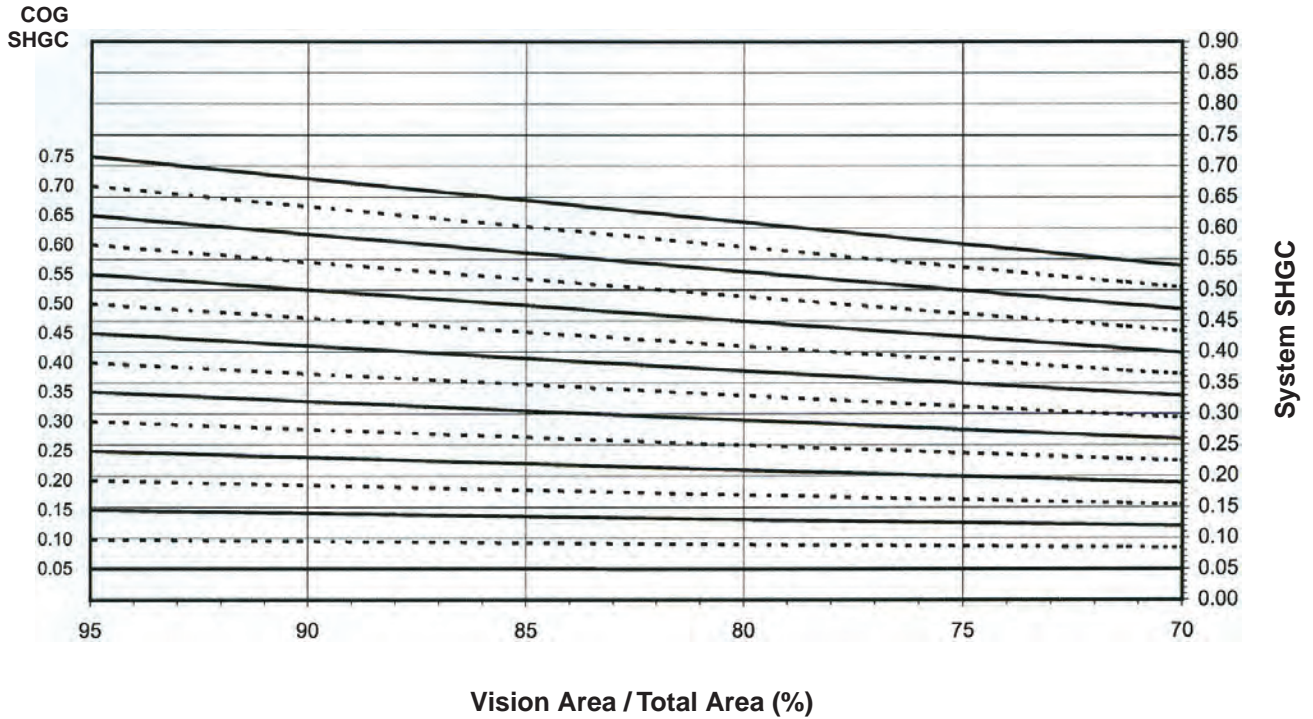
Glass properties are based on center of glass values and are obtained from your glass supplier.

Laws and building and safety codes governing the design and use of glazed entrance, window, and curtain wall products vary widely. Kawneer does not control the selection of product configurations, operating hardware, or glazing materials, and assumes no responsibility therefor.

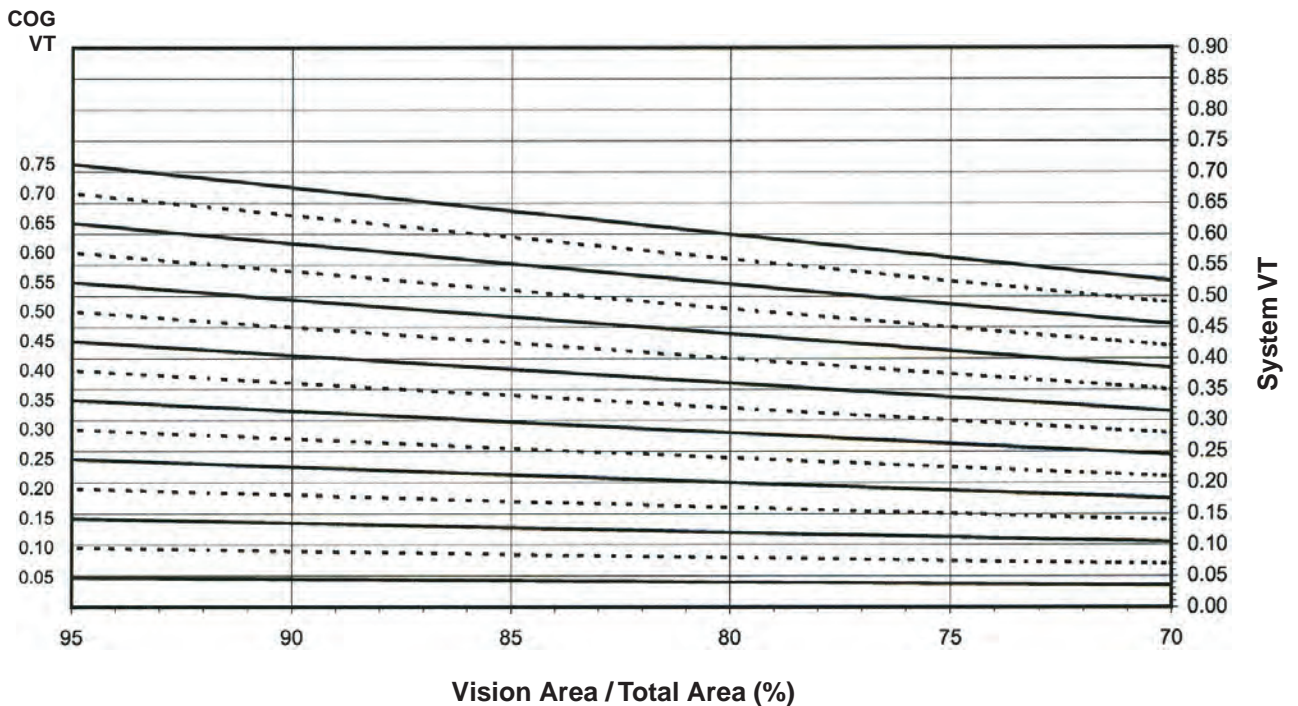
Kawneer reserves the right to change configuration without prior notice when deemed necessary for product improvement.
© Kawneer Company, Inc., 2011

SINGLE HUNG VERTICAL SLIDER WITH 1" GLAZING

System Solar Heat Gain Coefficient (SHGC) vs Percent of Vision Area



System Visible Transmittance (VT) vs Percent of Vision Area



Laws and building and safety codes governing the design and use of glazed entrance, window, and curtain wall products vary widely. Kawneer does not control the selection of product configurations, operating hardware, or glazing materials, and assumes no responsibility therefor.

Kawneer reserves the right to change configuration without prior notice when deemed necessary for product improvement.
 © Kawneer Company, Inc., 2011

Thermal Transmittance¹ (BTU/hr • ft² • °F)

Glass U-Factor ³	Overall U-Factor ⁴
0.48	0.65
0.46	0.64
0.44	0.63
0.42	0.61
0.40	0.60
0.38	0.59
0.36	0.58
0.34	0.56
0.32	0.55
0.30	0.54
0.28	0.53
0.26	0.51
0.24	0.50
0.22	0.49
0.20	0.47

**SINGLE HUNG VERTICAL SLIDER
WITH 1" GLAZING**

NOTE: For glass values that are not listed, linear interpolation is permitted.

1. U-Factors are determined in accordance with NFRC 100.
2. SHGC and VT values are determined in accordance with NFRC 200.
3. Glass properties are based on center of glass values and are obtained from your glass supplier.
4. Overall U-Factor, SHGC, and VT Matrices are based on the standard NFRC specimen size of 1200mm wide by 1500mm high (47-1/4" by 59-1/16").

SHGC Matrix²

Glass SHGC ³	Overall SHGC ⁴
0.75	0.55
0.70	0.51
0.65	0.48
0.60	0.44
0.55	0.41
0.50	0.37
0.45	0.33
0.40	0.30
0.35	0.26
0.30	0.23
0.25	0.19
0.20	0.16
0.15	0.12
0.10	0.08
0.05	0.05

Visible Transmittance²

Glass VT ³	Overall VT ⁴
0.75	0.54
0.70	0.50
0.65	0.46
0.60	0.43
0.55	0.39
0.50	0.36
0.45	0.32
0.40	0.29
0.35	0.25
0.30	0.21
0.25	0.18
0.20	0.14
0.15	0.11
0.10	0.07
0.05	0.04

Laws and building and safety codes governing the design and use of glazed entrance, window, and curtain wall products vary widely. Kawneer does not control the selection of product configurations, operating hardware, or glazing materials, and assumes no responsibility therefor.

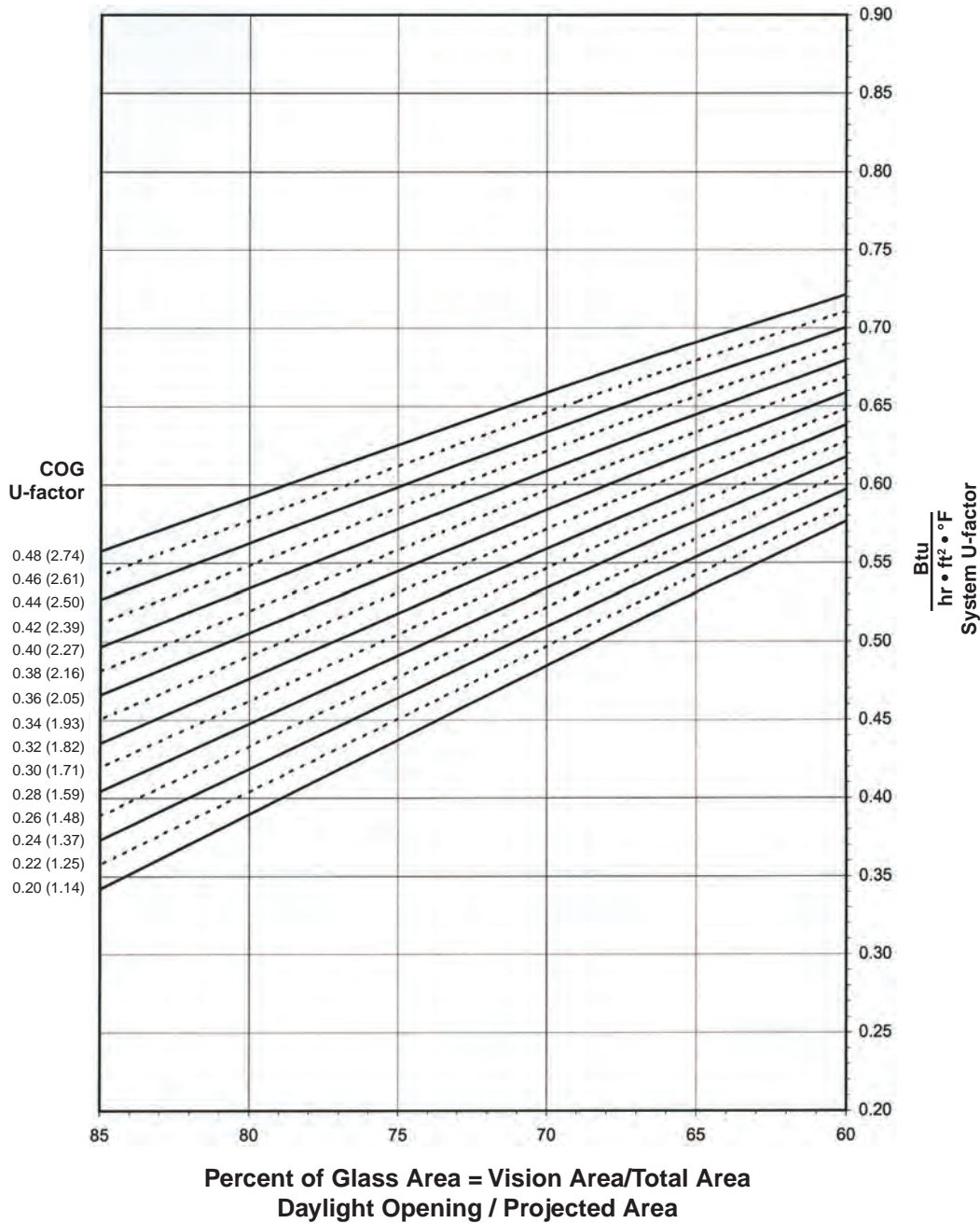
Kawneer reserves the right to change configuration without prior notice when deemed necessary for product improvement.
© Kawneer Company, Inc., 2011

DOUBLE HUNG VERTICAL SLIDER WITH 1" GLAZING

Note:

Values in parentheses are metric.
 COG = Center of Glass.
 Charts are generated per AMMA 507

System U-factor vs Percent of Glass Area



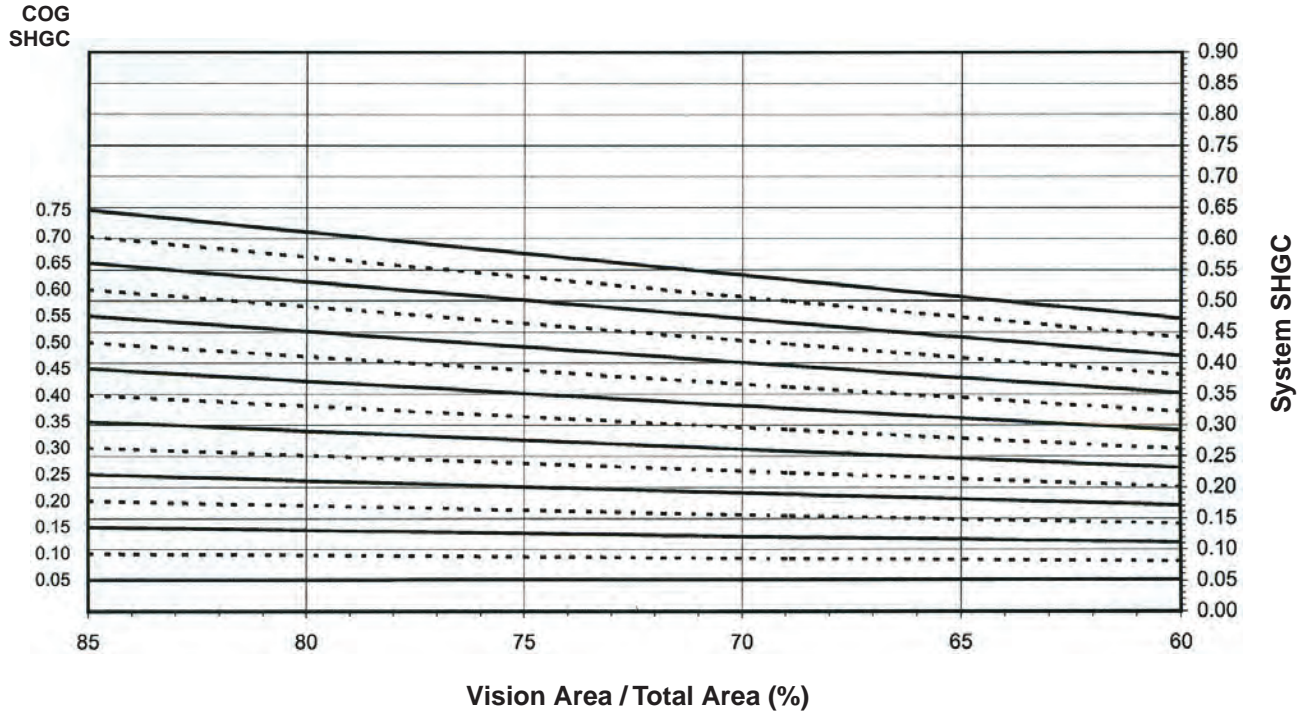
Notes for System U-factor, SHGC and VT charts:

For glass values that are not listed, linear interpolation is permitted.
 Glass properties are based on center of glass values and are obtained from your glass supplier.

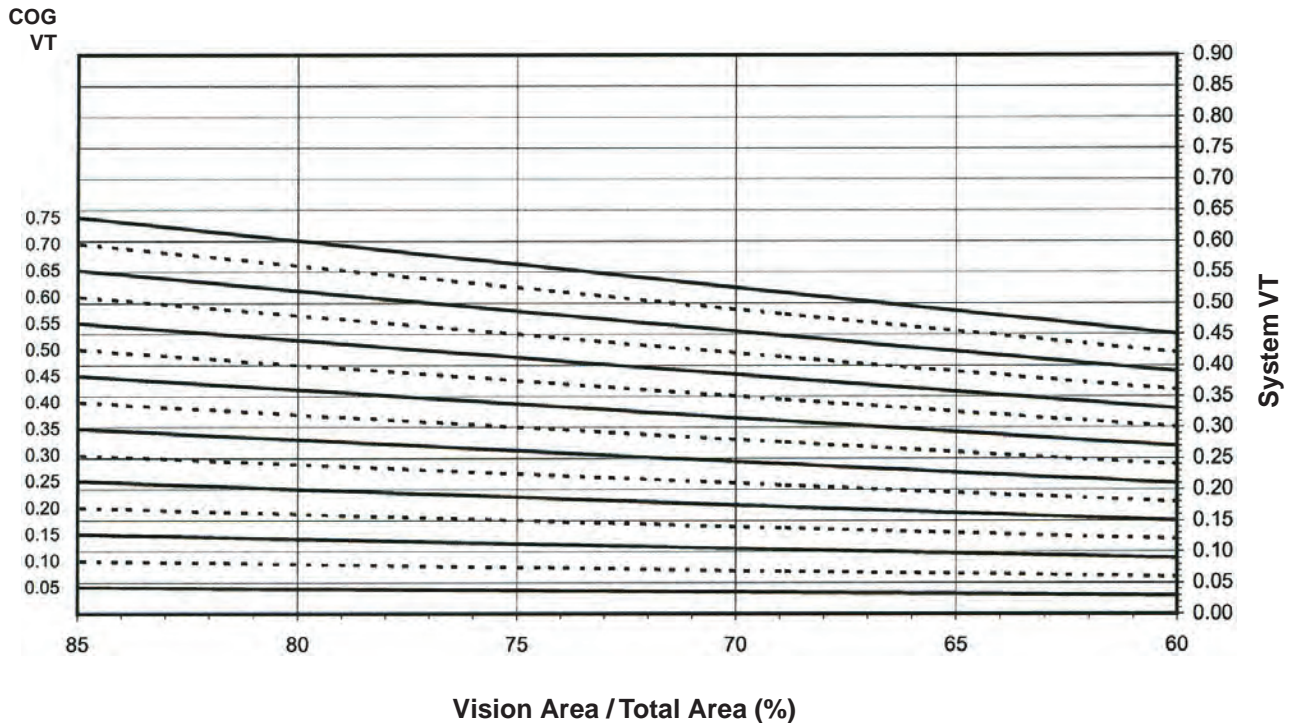
Laws and building and safety codes governing the design and use of glazed entrance, window, and curtain wall products vary widely. Kawneer does not control the selection of product configurations, operating hardware, or glazing materials, and assumes no responsibility therefor.

 Kawneer reserves the right to change configuration without prior notice when deemed necessary for product improvement.
 © Kawneer Company, Inc., 2011

DOUBLE HUNG VERTICAL SLIDER WITH 1" GLAZING
System Solar Heat Gain Coefficient (SHGC) vs Percent of Vision Area



System Visible Transmittance (VT) vs Percent of Vision Area



Laws and building and safety codes governing the design and use of glazed entrance, window, and curtain wall products vary widely. Kawneer does not control the selection of product configurations, operating hardware, or glazing materials, and assumes no responsibility therefor.

Kawneer reserves the right to change configuration without prior notice when deemed necessary for product improvement.
 © Kawneer Company, Inc., 2011

Thermal Transmittance ¹ (BTU/hr • ft ² • °F)

Glass U-Factor ³	Overall U-Factor ⁴
0.48	0.67
0.46	0.65
0.44	0.64
0.42	0.63
0.40	0.62
0.38	0.60
0.36	0.59
0.34	0.58
0.32	0.57
0.30	0.56
0.28	0.54
0.26	0.53
0.24	0.52
0.22	0.51
0.20	0.49

DOUBLE HUNG VERTICAL SLIDER WITH 1" GLAZING

NOTE: For glass values that are not listed, linear interpolation is permitted.

1. U-Factors are determined in accordance with NFRC 100.
2. SHGC and VT values are determined in accordance with NFRC 200.
3. Glass properties are based on center of glass values and are obtained from your glass supplier.
4. Overall U-Factor, SHGC, and VT Matricies are based on the standard NFRC specimen size of 1200mm wide by 1500mm high (47-1/4" by 59-1/16").

SHGC Matrix ²

Glass SHGC ³	Overall SHGC ⁴
0.75	0.53
0.70	0.50
0.65	0.47
0.60	0.43
0.55	0.40
0.50	0.36
0.45	0.33
0.40	0.29
0.35	0.26
0.30	0.22
0.25	0.19
0.20	0.15
0.15	0.12
0.10	0.09
0.05	0.05

Visible Transmittance ²

Glass VT ³	Overall VT ⁴
0.75	0.52
0.70	0.48
0.65	0.45
0.60	0.41
0.55	0.38
0.50	0.35
0.45	0.31
0.40	0.28
0.35	0.24
0.30	0.21
0.25	0.17
0.20	0.14
0.15	0.10
0.10	0.07
0.05	0.03

Laws and building and safety codes governing the design and use of glazed entrance, window, and curtain wall products vary widely. Kawneer does not control the selection of product configurations, operating hardware, or glazing materials, and assumes no responsibility therefor.

Kawneer reserves the right to change configuration without prior notice when deemed necessary for product improvement.
© Kawneer Company, Inc., 2011

HORIZONTAL SLIDER WITH 1" GLAZING

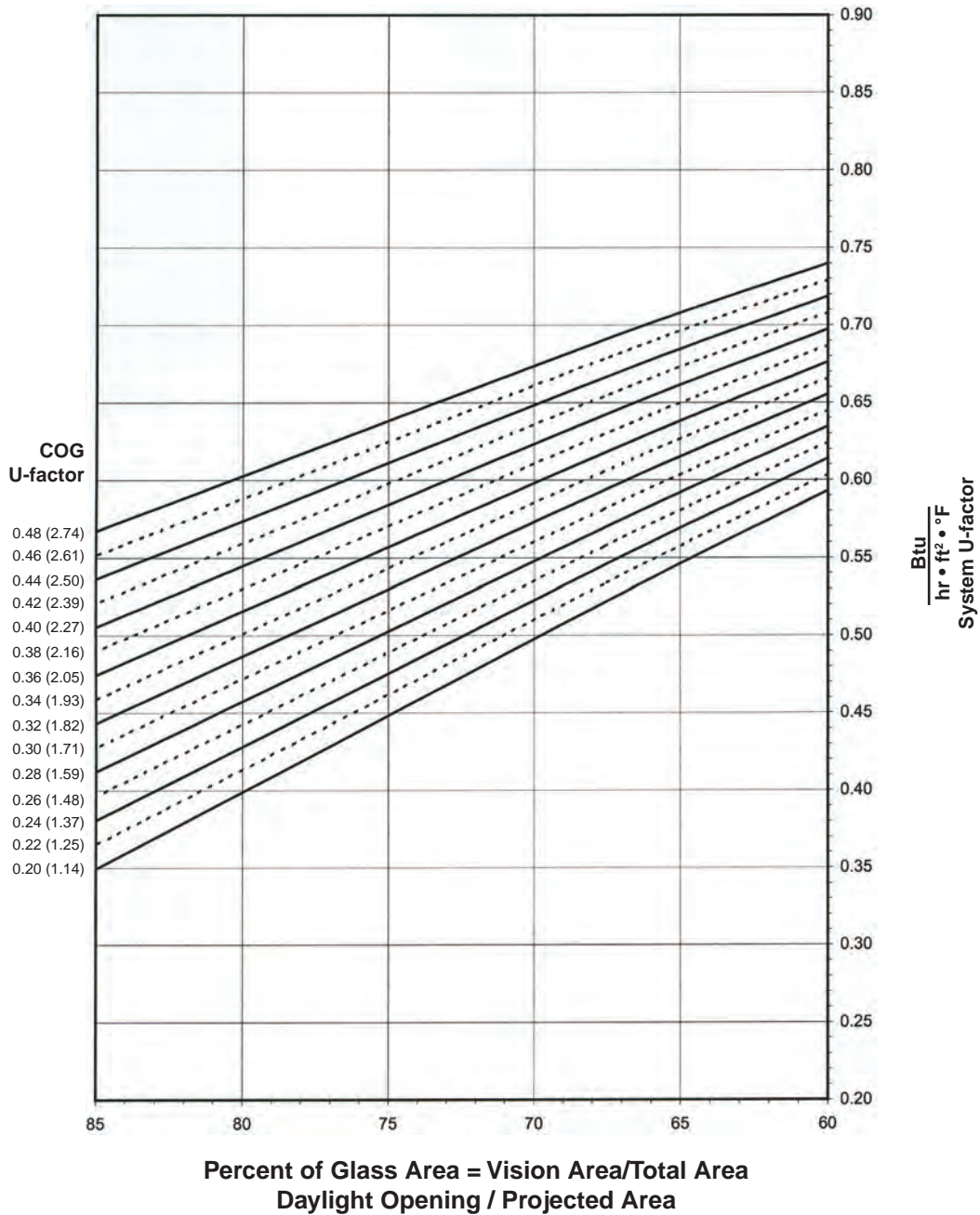
Note:

Values in parentheses are metric.

COG = Center of Glass.

Charts are generated per AMMA 507

System U-factor vs Percent of Glass Area



Notes for System U-factor, SHGC and VT charts:

For glass values that are not listed, linear interpolation is permitted.

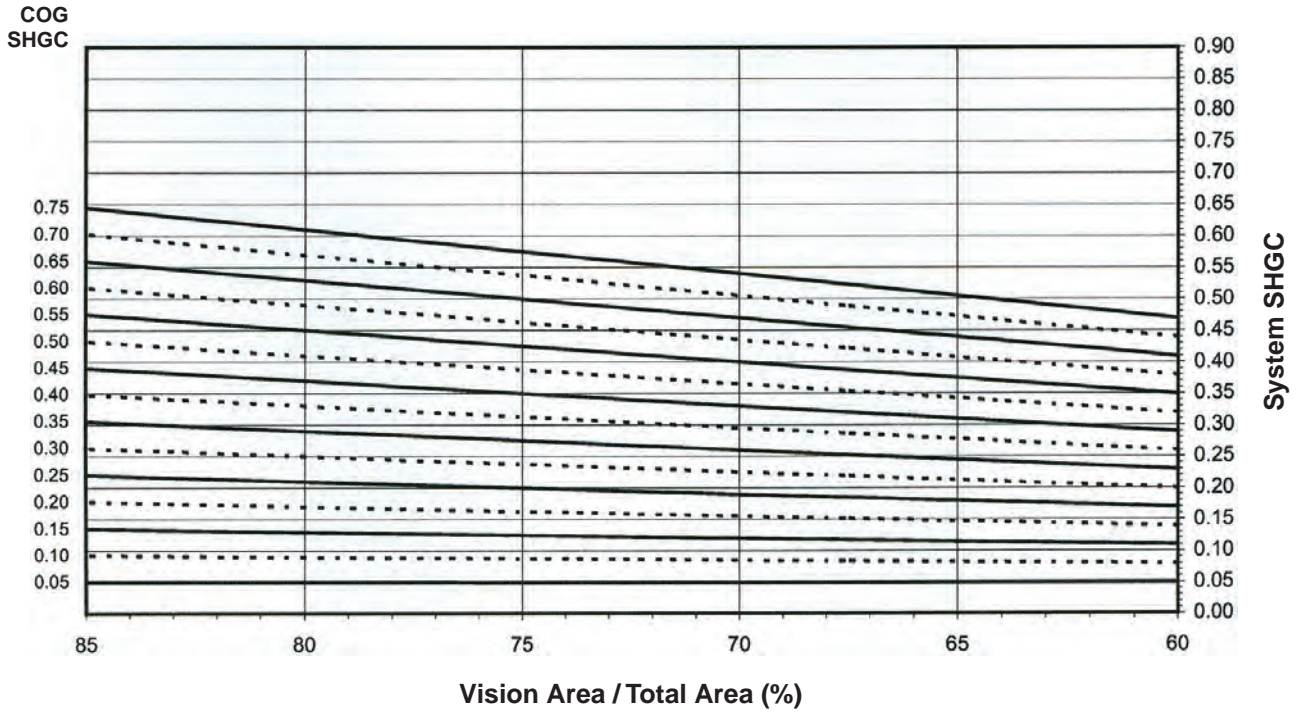
Glass properties are based on center of glass values and are obtained from your glass supplier.

Laws and building and safety codes governing the design and use of glazed entrance, window, and curtain wall products vary widely. Kawneer does not control the selection of product configurations, operating hardware, or glazing materials, and assumes no responsibility therefor.

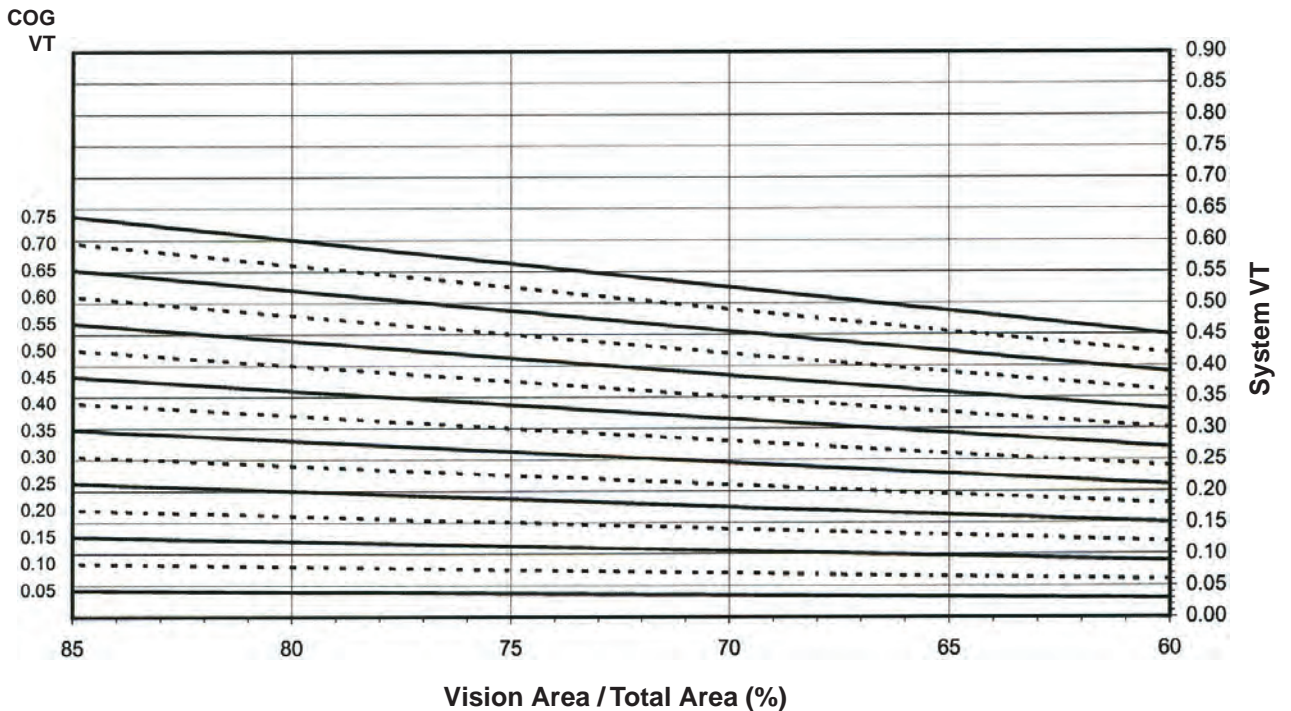
Kawneer reserves the right to change configuration without prior notice when deemed necessary for product improvement.
© Kawneer Company, Inc., 2011

HORIZONTAL SLIDER WITH 1" GLAZING

System Solar Heat Gain Coefficient (SHGC) vs Percent of Vision Area



System Visible Transmittance (VT) vs Percent of Vision Area



Laws and building and safety codes governing the design and use of glazed entrance, window, and curtain wall products vary widely. Kawneer does not control the selection of product configurations, operating hardware, or glazing materials, and assumes no responsibility therefor.

Kawneer reserves the right to change configuration without prior notice when deemed necessary for product improvement.
 © Kawneer Company, Inc., 2011

Thermal Transmittance¹ (BTU/hr • ft² • °F)

Glass U-Factor ³	Overall U-Factor ⁴
0.48	0.69
0.46	0.68
0.44	0.67
0.42	0.65
0.40	0.64
0.38	0.63
0.36	0.62
0.34	0.61
0.32	0.59
0.30	0.58
0.28	0.57
0.26	0.56
0.24	0.54
0.22	0.53
0.20	0.52

**HORIZONTAL SLIDER
WITH 1" GLAZING**

NOTE: For glass values that are not listed, linear interpolation is permitted.

1. U-Factors are determined in accordance with NFRC 100.
2. SHGC and VT values are determined in accordance with NFRC 200.
3. Glass properties are based on center of glass values and are obtained from your glass supplier.
4. Overall U-Factor, SHGC, and VT Matricies are based on the standard NFRC specimen size of 1500mm wide by 1200mm high (59-1/16" by 47-1/4").

SHGC Matrix²

Glass SHGC ³	Overall SHGC ⁴
0.75	0.52
0.70	0.49
0.65	0.46
0.60	0.42
0.55	0.39
0.50	0.35
0.45	0.32
0.40	0.29
0.35	0.25
0.30	0.22
0.25	0.18
0.20	0.15
0.15	0.12
0.10	0.08
0.05	0.05

Visible Transmittance²

Glass VT ³	Overall VT ⁴
0.75	0.51
0.70	0.47
0.65	0.44
0.60	0.41
0.55	0.37
0.50	0.34
0.45	0.30
0.40	0.27
0.35	0.24
0.30	0.20
0.25	0.17
0.20	0.14
0.15	0.10
0.10	0.07
0.05	0.03

Laws and building and safety codes governing the design and use of glazed entrance, window, and curtain wall products vary widely. Kawneer does not control the selection of product configurations, operating hardware, or glazing materials, and assumes no responsibility therefor.

Kawneer reserves the right to change configuration without prior notice when deemed necessary for product improvement.
© Kawneer Company, Inc., 2011